

Cutting Tools

GENERAL GRAPHIC BLADE CENTER

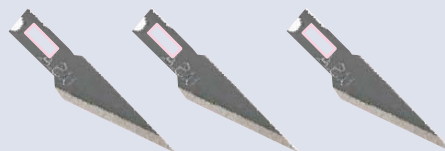
K1B These U.S. made 13 point snap-off blades feature a long-lasting ultra sharp edge. Replacement blades for K1, OLFA A, 180, 300, SVR, Federal Graphics #18 and #1800 knives and General Graphic K-1 knife. 100/pkg



K2B These U.S. made 8 point snap-off blades are razor sharp and long lasting. Replacement blades for K2, OLFA L1, L2 and Federal #700 and #710 knives and General Graphic K-2 knife. 100/pkg



K11B U.S. made replacement blades for X-ACTO #1, Gripster, and X2000 knives, Federal Graphics #1 AK Series and #11 Technical Knife. 100/pkg



SABLADE Fits most Sircle, Keencut and Fletcher-Terry Foam Board Trimmers that use a double notch blade. 100/pkg



RAZOR BLADES

Industrial quality razor blades. Single-edged in either 9 or 12 gauge. Packed 100 per package.



Code: **R9** No. 9 Razor Blades, 100/pkg
R12 No. 12 Razor Blades, 100/pkg

DELUXE # 18 KNIFE

A sturdy knife that holds 13 point snap-off blades. Made of plastic and metal. Features a locking blade design. Blade is retractable.

Code: **K1**



DELUXE # 700 KNIFE

A heavy-duty knife, great for carton opening or cutting heavy materials such as laminates or blankets.

Code: **K2**



#1 ART KNIFE

Durable aluminum handle knife for art and graphic arts.

Code: **AK**



#1 SOFT GRIP CONTOURED HANDLE

Rubberized soft grip for comfortable use with flared end to prevent rolling.

Code: **AK-SG**



#1 SOFT HANDLE

Comfort soft grip over a lightweight aluminum frame. Rear blade release mechanism.

Code: **AK-SH**



X-ACTO KNIVES

X2000 KNIFE



Soft rubberized contoured barrel makes knife comfortable and easy to grip. Safety cap fits on back of knife to prevent misplacing. Center-barrel blade release for safer and easier blade changing. Unique anti-roll wedge.

Code: **X2000**

GRIPSTER



Soft rubberized barrel and anti-roll. Includes #11 blade.

Code: **XACTO-GRIP**

No. 1 KNIFE



Light duty knife with cap. Five inch aluminum handle complete with #11 blade.

Code: **XACTO-3001**

X-ACTO BLADES

No. 11 BLADES



Extremely sharp point for angle cutting and stripping. Made in USA.

Code:

XACTO-411

No. 11 Blade, 15/dispenser

XACTO-611

No. 11 Blade, 100/pkg

XACTO-611SS

No. 11 Blade, 100/pkg

Stainless Steel (Formerly #621 Blade)

No. 16 BLADES



Stenciling, scoring & etching.

XACTO-616

No. 16 Blade, 100/pkg

Other X-Acto Products Available—Please contact us for information

OLFA KNIVES AND CUTTING BLADES

MODEL A KNIFE

A professional model for draftsmen, designers, etc. Blade can be put in either way for right or left-handed users. Uses AB-10, AB-50 or K1B replacement blades.

Code: **OLFA-A**



SILVER KNIFE

Stainless steel deluxe model for graphics industry. SVR-2 comes with locking blade. Uses AB-10, AB-50 or K1B standard replacement blades.

Code: **SVR-1**
SVR-2



AB STANDARD BLADES

Fits the A, Silver, 300 and 180 series cutters. Blades snap off providing 13 cutting edges. Available in regular steel, stainless steel, and with 30° angle same as the #11 art blade.

Code: **AB-10** 10/pkg
AB-50 50/pkg
AB-10S Stainless Steel
AB-1160B Art blade w/ 30° 50/pkg



MODEL 180

Multipurpose knife with metal liner. Uses AB-10, AB-50 or K1B standard replacement blades.

Code: **180**



MODEL L1 AND L2

Heavy-duty knife with steel shank and lock. Model L2 has an anti-slip rubber grip insert. Uses LB-10, LB-50 or K2B snap off blades.

Code: **O-L1**
O-L2



LB HEAVY DUTY BLADES

Fits all L1, L2 and FL series cutters. Available in two sizes, the LB-10 has 10 replacement blades and the LB-50 has 50 replacement blades. Blades snap off providing 8 cutting edges.

Code: **LB-10** 10/pkg
LB-50 50/pkg



Scales and Rulers

PROPORTIONAL SCALE

A scale to calculate the percentage of reductions and enlargements for camera or copier sizing.

Code: **PS-79** 6"



GRAPHIC ARTS RULER ALUMINUM

Calibrations include inches, picas (with standard newspaper column widths), type point sizes and rule widths. Constructed of aluminum.

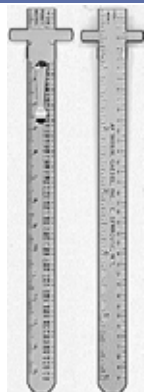
Code: **4100-01** 18" ruler



POCKET RULER

A two-sided 6" ruler with a clip. Has pica/half-pica increments on front top and inches (16ths) on the bottom. On the back edge are point increments on the top and metric on the bottom.

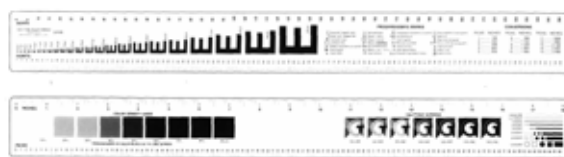
Code: **IP-6**



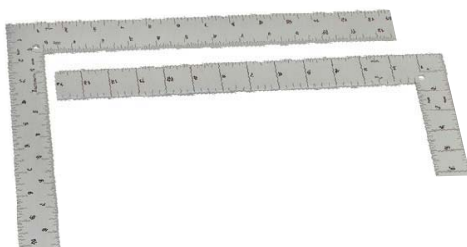
GRAPHIC ARTS RULER—PLASTIC

Plastic ruler with measurements in inches and picas. Includes proofreader symbols, E Scale and screen tints in 10% increments. Size is 2" x 18".

Code: **GA-86**



L-SQUARES



Calibrated on both the inside and outside edges and on the front and back for left and right-handed use.

Code:

4010-1 L-Square, Small 6" x 12"

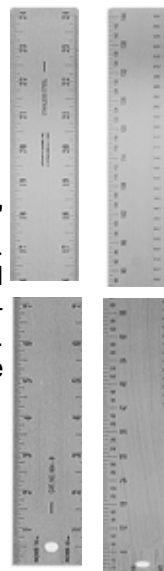
4040-1 L-Square, Large 14" x 24"

STEEL RULERS

Series 604:

This two-sided ruler is 1 1/2" wide, .032" thick, and available in 24" and 36" lengths. The front has inches in 16ths on the top and bottom and a type gauge slit on the left giving the type size markings from 5-30 points. The reverse side has picas/half-picas on the top and agate lines on the bottom.

Code: **604-24** 24"
604-36 36"



LINE GAUGES

Series 612H:

Two sided line gauge. Front side has 6 and 12 point and inches in 1/16 increments; reverse side has metric and point scale.

Code: **612-12** 12"
612-18 18"
612-24 24"



METER STICK

This two-sided stainless steel meter stick has inches in 16ths on the top and millimeters on the bottom. The reverse side contains zero-centered inch and metric scales. 1 1/4" wide, .032" thick, and 1 meter in length.

Code: **3392** Meter Stick



MASTERLINE MASKING SHEETS

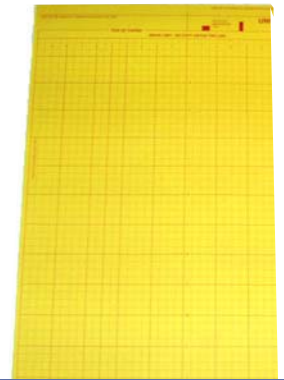
MASTERLINE pre-ruled goldenrod masking sheets are customized for specific press models and sizes, and include all reference margins, head margins, center lines, image areas, start of print lines, paper stops, and more. Packaged 100 sheets per box.

Code:	Press:	Size:
A.B. Dick		
MS-ABD360A	A.B. Dick 360	11 1/4" x 18 5/8"
MS-ABD360L	A.B. Dick 360L	11 1/16" x 19"
MS-ABD9800	A.B. Dick 9800 Series	13 1/8" x 19 15/16"
MS-ABD385	A.B. Dick 385	23" x 19 3/8"
HAMADA		
MS-H600	Hamada 600	11 13/16" x 18 1/4"
MS-H700	Hamada 700/770	18 1/2" x 16"
MS-HC248	Hamada C248	15 7/8" x 19"
RYOBI		
MS-R2800	Ryobi 2800/Ittek 960	11 1/2" x 18 1/2"
MS-R2800XL	Ryobi 2800CDXL	11 9/16" x 19 3/8"
MS-R3200	Ryobi 3200/Ittek 975	13" x 19 1/2"
MS-R3302	Ryobi 3302/Ittek 3985	13 1/4" x 19 1/4"
MS-R512	Ryobi 512/520	20 3/16" x 15 3/4"
HEIDELBERG		
MS-QM46	Quickmaster	13 3/4" x 20"
MS-GTO46	GTO 46	18" x 15"
MS-GTO52	GTO 52	20 1/4" x 15 7/8"
MS-SM52	SpeedMaster 52	20 7/8" x 18 5/32"
MS-KORD64	KORD 64/62	25 3/4" x 21 5/8"
MS-SORK	SORK	25 5/8" x 21 5/8"
MULTI		
MS-M1250R3	Multilith 1250	10 1/16" x 15 5/8"
MS-M1250LW	Multilith 1250LW	11 1/8" x 18 3/16"
MS-M1360	Multilith 1360	12 3/4" x 18 7/32"
MS-M1850	Multilith 1850	18 1/8" x 15 1/8"
UNIVERSAL		
MS-U1015	Universal 10 x 15	10 1/4" x 16 1/16"
MS-U1117	Universal 11 x 17	11 1/4" x 18 1/2"
MS-U1319	Universal 13 x 19	13 1/8" x 19 7/8"
MS-U29	Universal 29	31 5/8" x 29"
MS-TAND17	Didde Glaser Tandemer 17	13 1/2" x 18 1/4"
MS-JP2	Halm Jet Press	12 1/4" x 9 1/2"
MS-JP6	Halm Super Jet	12 1/4" x 19 9/16"

UNRULED MASKING PAPER

MS-UN13520	13 1/2" x 20"
MS-UN1620	16" x 20"
MS-UN16.521	16 1/2" x 21"
MS-UN2024	20" x 24"
MS-UN2228	22" x 28"
MS-UN2436	24" x 36"
MS-UN2538	25" x 38"
MS-UN3040	30" x 40"
MS-UN3545	35" x 45"

UNRULED SIZES AVAILABLE IN PACKAGES OF 100 SHEETS OR IN BULK PACKAGES OF 500 SHEETS.



PLASTIC REGISTER TABS



Precision made of tough, thick polyester for dimensional stability, these tabs allow precise alignment and positioning. Package of 250. Round 1/4" hole.

Code:

TAB-N

Non-Adhesive

TAB-A

Adhesive

RED LITHO TAPE



For all masking jobs. Translucent red color masks out light. Comes with 3" core, 72 yard length.

Code:

Size:

616-1-4

1/4" roll

616-3-8

3/8" roll

616-1-2

1/2" roll

616-3-4

3/4" roll

Layout Supplies

ARTIST WHITE TAPE



High quality flat craft paper tape. Will not yellow. Repositionable. Available in four sizes. Comes with 3" core roll, 60 yard length.

Code: **256-1-4W** 1/4"
256-1-2W 1/2"
256-3-4W 3/4"
256-1W 1"

CELLULOSE SPONGES

A high quality photographic fine-pore sponge for use in the plate room and dark room. Fine pore sponges available in three sizes.



Code: Size:
6AF 6" x 3 1/2" x 1"
8AF 6" x 4" x 1 1/2"
10AF 7" x 4 1/2" x 2"

SHEARS



Designed to accommodate the needs and comfort for both personal and professional use. The handles are made of tough ABS plastic that gently forms around your fingers. This comfortable fit reduces pressure points and fatigue during extended use.

These commercial grade shears can handle the toughest material as well as the most delicate fabric. They feature Solingen steel cutting blades that are machine ground and hardened to 56 Rockwell. The #50038 8" All-Around Shear that has an aggressive micro-toothed cutting edge

Code: **50008** 8" Super Shear
50010 10" Super Shear
50038 8" All Around Shear

GLUE STICKS

Ideal for layout work. Glue remains repositionable for an extended period before drying. Available in super size and jumbo size.

Code: **GS** Super Size 25 grams
GS-1 Jumbo Size 40 grams



BRAYERS



Both rubber and acrylic roller brayers are available.

The hard rubber rollers are ideal for burnishing or for inking.

The acrylic brayers can be used for burnishing and paste up work. Will not pick up rubber cement, wax, and some adhesives.

Roller is 4" to 8" widths.

Code: **BRAY-AR4** Acrylic 4"
BRAY-AR6 Acrylic 6"
BRAY-AR8 Acrylic 8"

BRAY-RR4 Rubber 4"
BRAY-RR6 Rubber 6"

OPAQUE BRUSHES

Red Sable, meticulously crafted, points well and holds its shape. Seamless ferrules on hardwood handles.

Code:	Size:	Code:	Size:
OB-000	3/0	OB-4	4
OB-00	2/0	OB-5	5
OB-0	0	OB-6	6
OB-1	1	OB-7	7
OB-2	2	OB-8	8

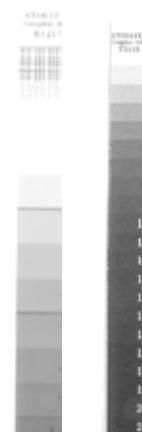


STOUFFER SCALES/GUIDES

CAMERAMAN'S 12 STEP GUIDE: Helps produce line negatives of consistent quality, density and line fidelity regardless of the many variables encountered in exposure and processing.

PLATEMAKER'S 21 STEP GUIDE: This transparent guide serves as a gauge to evaluate the variables encountered in the exposure and processing of lithographic plates and photographic materials by contact.

Code:
12-STEP Cameraman's Reflection Guide
21-STEP Platemaker's Transparent Guide



Loupes -Magnifiers

LINEN TESTER

LT-6L Solid metal construction with 1" X 1" base. Two LED lights with 6 power magnification. Includes battery.

LT-1 Linen tester gives clear, sharp definition. Has 1" x 1" metal base opening with 6 power magnification. Double lens.

LT-30 magnifier is a plastic foldout magnifier featuring a 5x power 30 mm lens. The LT-30 contains markings in both inches and centimeters for easy measuring of small parts.

Code:

LT-6L 6X 1" x 1" Metal base lighted

LT-1 6X 1" x 1" Metal base

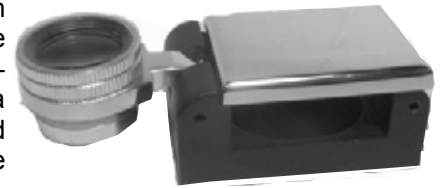
LT-30 5X 1" x 1" Plastic base



12X FOLDING BASE LOUPE

High resolution coated optics make inspection of half-tones and line copy a snap. Self contained loupe that can be folded to protect optics. Includes case.

Code: **LOUPE-12F**



VT-300 DIGITAL MICROSCOPE

The versatility of this device (microscope, camera, video camera and web cam) and the newly added "point-to-point" distance measurement is unparalleled to all others. The manual focus capability allows the user to attain the sharpest focus in any environment. The optical zoom is 10x ~ 40x, and the digital zoom is 15x ~ 200x. Moreover, the captured images can be transferred to your computer (PC) via the USB cable connection. Additional functions like image compare (side-by-side comparison), scale measurement, grayscale, emboss, inverse, point to point distance measurement, and others are available with included software.

Code: **VT-300** Digital Microscope



CRX-22 LED LIGHTED MICROSCOPE

The **CRX-22** is a 60x - 120x power LED lighted pocket microscope. The CRX-22 is an extremely powerful, compact, and versatile microscope. The rubberized eyepiece and the manual focus system ensures a perfect focus every time. The LED illumination will ensure users a clear, bright, and crisp image. Battery (AA) not included.

Code: **CRX-22**



CIRCLE AND CUBE LOUPE

Magnifier has prefocused dual lenses for close-up examination of objects, while its transparent acrylic base allows ambient light to illuminate the subject for bright, clear viewing.

Code: **LOUPE-C1** 10 power

LOUPE-C2 15 power

LOUPE-CU 8 power



PRINTER'S FOLDING LOUPE

Mounted in nickel plated case. Recommended where greater magnification is needed. Rated at 16 power magnification.

Code: **LOUPE-16**



DIGITAL USB MICROSCOPE

UM-02 digital USB microscope is ultra compact and multi-versatile. It has a 2M pixels CMOS image sensor, adjustable focus control, and adjustable LED illumination to deliver the sharpest image with superb clarity. The UM-02 can be used as a digital microscope, camera, video recorder as well as a web camera. Each UM-02 digital USB microscope comes with multifunctional software which includes image capture, side-by-side comparison, save image and video, and image process including gray scale, black and white conversion, edge detection, and measurement mode. PC required.

Code: **UM-02** Digital Microscope



Pens and Copy Check

FILM OPAQUE



General Graphic Lith-O-paquer II red opaque pens are waterproof, smudge proof and lightproof. These silky smooth flowing pens feature a special formulation of UV absorbers from even the strongest light sources. The even-flowing marker nibs lay down a rapid-drying, thin red opaque film that doesn't build up, creep, spread, chip or crack.

Code: **OP-N** Needle point
OP-F Fine point
Code: **OP-M** Medium point
OP-W Wedge nib

Mark-tex Black Opaque Pens contain a specially formulated water resistant ink that blocks light transmission.

Code:
1100 Fine black
1102 Broad black

ILLUSTRATOR BLUE MIRAGE PENS



Blue Mirage felt tip pens deliver consistent clog-free ink flow, dry instantly, won't smear, and are totally unaffected by rubber cement. Ideal for guidelines, holding lines, mechanicals, stripping, or indicating copy changes. The XX Micro Point is the choice for any line you don't want to reproduce.

Code: **IP** Illustrator Pen Non-Repro Blue

NON-REPRO BLUE PENCILS



A proven classic - used by printers and creators for years. This non-repro blue pencil has a medium-soft lead that works and rules with ease.

Code: **NR-P**

SILVER MASTER PLATES



IMAGE REMOVER PENS instantly remove shadows from the plate, even if it is still on the press, making the print area non-receptive to ink. Made to be used on Itek, Megalith or any Silver Master plate.

Code: **SMD-F** Fine
SMD-B Broad

8

METAL PLATES

IMAGE REMOVER

Delete images and scratches from metal offset plates that are still on the press. Will not affect the plate coating.



Code: **IMR-F** Fine
IMR-B Broad

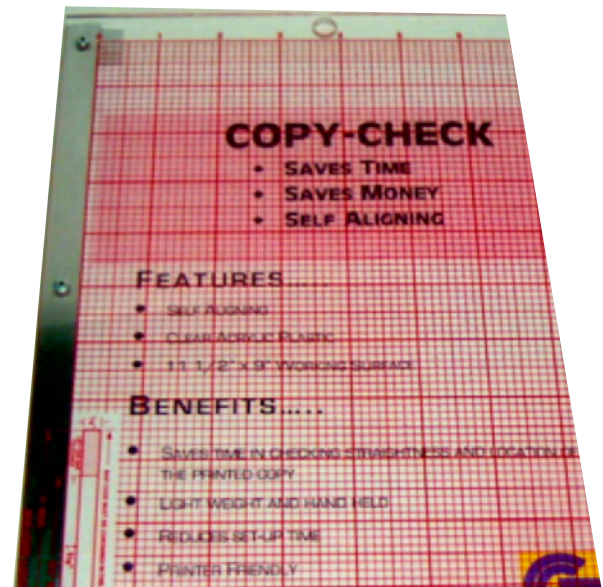
IMAGE ADDITIONER

Allows you to write directly on metal plates while they're still on the press. Will not affect the plate coating. Use fine point to repair type and broad point to fill holes in solids.



Code: **IMA-F** Fine
IMA-B Broad

COPY-CHECK



The **COPY-CHECK** is ideal for checking the straightness and location of the printed copy. The **COPY-CHECK** has a working surface of 11 1/2" x 9". A red solvent resistant grid is printed on the surface. An added feature includes a grid area designed for envelope alignment including bar code location.

Code: **CC-1**

Pantone*, Scales and pH

PANTONE PLUS COLOR FORMULA GUIDE

The **FORMULA GUIDE** is a necessary tool for graphic designers, pre-press professionals and printers. This two-guide set contains 1,755 PANTONE Colors on coated or uncoated stock with ink mixing formulas. Includes ColorChecker® Lighting Indicator to aid in lighting evaluation.



Code: **PT-GUIDE**

PANTONE PLUS COLOR BRIDGE

Bridge solid PANTONE Colors for process printing or web design. The **PANTONE PLUS SERIES COLOR BRIDGE** Set provides process color simulations of all solid PANTONE and has process matches with CMYK screen tint percentages displayed next to each solid color. Also shown are RGB and HTML values for solid colors.



Code: **PT-BR** Color Bridge Coated
PT-BRS Color Bridge Coated/Uncoated

CMYK COATED & UNCOATED

The new **PLUS SERIES CMYK** guide contains 2,868 CMYK colors, chromatically arranged for smoother transitions between colors and more intuitive selection. These guides are an ideal way to visualize, communicate, and control colors for type, logos, borders, backgrounds and other graphic treatments. Compatible with today's digital workflows. Screen tint percentages are provided to enable accurate color reproduction. Text weight paper is used, to match popular print specifications.



Code: **PT-PROC** 4 Color Process Guide

PREMIUM METALLICS

The **PLUS SERIES PREMIUM METALLICS** is an all new book of 300 metallic colors chromatically arranged in the fan format.



Code: **PT-METAL** Metallic Color Guide Coated

PANTONE FORMULA SCALE 3

The **PANTONE Formula Scale 3** (PFS-3) comes programmed with all the formulas contained in the standard PANTONE formula guides including Metallics and Pastels.



It has a weighing resolution of 1.0 grams, so accurate mixes of very small quantities can be achieved, from just a few grams to a maximum of 2 Kilograms. For those who work with imperial measures, the scale can also be set to work in pounds with a capacity of 2 lbs with a weighing resolution of 0.001 pounds.

The PFS-3+ model has increase weighing resolution to 0.1 grams and can store up to 100 programmed colors.

Code: **PFS3** Formula Scale 3
PFS3+ Formula Scale 3+

OPF-P COUNTING SCALE

Ideal for counting or mixing ink. Measure in ounces, pounds, grams and kilograms. Available in multiple capacities from 6.6 to 33 lbs. Pan size 13.3" x 9". Three displays: Weight, Unit Weight, and Count.



CODE:	CAPACITY:	READABILITY:
OP-P3	3,000 grams (6.6 lb)	0.1 grams
OP-P6	6,000 grams (13.2 lb)	0.2 grams
OP-P15	15,000 grams (33 lb)	1.0 grams

PH TESTER

pHep: An economical pH pocket tester with a Range: 0.0 to 14.0 pH, Accuracy: ±0.1 pH and a manual 1 point calibration. Rated for battery use of 150 hours continuous use.

Code: **PH-P** pH Tester



Cleaners, Lubricants and Dust-Off

SILICONE SPRAY

Especially formulated to aid in the press room and bindery to run smudge-free work. Prevents sticking or binding without greasy or oily build-up on metals. Non-flammable and odorless.



Code: **SILICONE** 11 oz

INK-SAV-R

Prevents ink and varnish from skinning in cans and fountains. Keeps ink open when sprayed on rollers. Will not affect the ink or varnish.



Code: **INKSAV-R** 14 oz.

GLISTEN GLASS CLEANER

Glisten cleans while leaving a sparkling, dirt resistant surface. Will not run or scratch. Fresh lemon smell.



Code: **GLISTEN** 19 oz.

LAS-CLEAN EX

Ideal solution for cleaning laser plates. Eliminates toning and provides sharper and brighter reproductions. Will not affect image.



Code: **LC-Q** Quart

RUBBER ROLLER CLEANER

Deep cleans rubber rollers, removes hardened ink and stains, and does an excellent job of deglazing. Non-abrasive cleaner, can also be used with rubber rollers on bindery equipment.



Code: **RR-CLEAN** Quart
RR-CLEANP Pint

CYLINDER CLEANER AND DESENSITIZER

Specifically designed to cut clean up time at the end of press run. Apply on chrome rollers and cylinder. Prevents ink from sticking or building up.



Code: **CYL-CLEAN** Quart

DUST-OFF XL

A disposable duster which removes dust and lint with moisture free blasts of pure air. Dust-Off is 100% ozone safe.



Code: **DO-XL** 10 oz

DUST BLASTER 44/RL REFILL

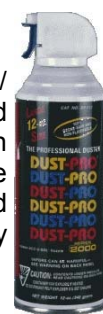
The Dust Blaster 44/RL is a refill can using a one-piece removal valve. This valve may be removed at any time.



Code: **DB-44RL** 10 oz
DB-44V Valve 1 piece

DUST BLASTER 44/DL DISPOSABLE

Disposable Dust Blaster 44/DL is 100% ozone safe and non-flammable. A built-in valve with plastic nozzle makes it easy to use, and when empty, it is completely disposable.



Code: **DB-44DL** 10 oz

HYDRAULIC OIL

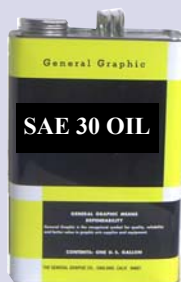
Hydraulic Oil #127 is for LAWSON and POLAR paper cutter hydraulic systems and graphic arts machines with similar systems. **Hydraulic Oil #129** is for CHALLENGE and CHANDLER & PRICE paper cutter hydraulic systems and graphic arts machines with similar systems.



Code: **127-G** Gallon
129-G Gallon

PRESS OIL

Available in 10, 20 and 30 weight oil. Contains corrosion and oxidation inhibitors. API Service Designation: SF/CC-CD.



Code: **SAE-10-G** 10 Weight Gallon
SAE-20-G 20 Weight Gallon
SAE-30-G 30 Weight Gallon

VAC-SURE VACUUM PUMP OIL

VAC-SURE is formulated to give more efficient, longer life to your vacuum pump. Ensures against foaming, sludge, gummy emulsions and varnish deposits.



Code: **VS-Q** Quart
VS-G Gallon

Blanket Fix, Sprayway and 3M

RUBBER ROLLER CLEANER & REJUVENATOR

Returns life to ink-laden, hardened rollers and blankets. Removes glaze resulting from gum, friction, ink, coatings, oxidation and light embossing.

Code:

SW-203 Rubber Roller Cleaner 13 oz



SILICONE SPRAY

Stops squealing, sticking, and binding of machinery. Dries rapidly; leaves no greasy or oily film. Retards corrosion; makes cleaning easier and quicker. Protects and preserves equipment. Long lasting residual performance.

Code:

SW-945 Silicone Spray 11 oz



SILICONE SPRAY FOOD SAFE

Stops sticking and binding; protects equipment. Reduces friction. FDA approval; can be used in food processing factories and kitchen areas.

Code:

SW-946 Silicone Spray 11 oz



PLASTIC SPRAY CLEAR FIXATIVE

Clear acrylic protective coating for use by artists, printers, picture framers, and screen printers. Protects artwork, proofs, photos, blueprints, etc. from aging, yellowing or smudging. Highly-flexible, water-repellent, quick-drying.

Code:

SW-201 Plastic Spray 13.5 oz



TONER AIDE

Greatly improves toner generated image quality. Develops higher resolutions and enhances detail clarity.

Code:

SW-208 Toner Aide 12 oz



SPECIALTY FILM CLEANER

For use in the screen printing studio, print shop, or any office where digital equipment is used. Safely cleans diazo film, color transparencies, screen tints, and scanner drums. Quick drying - leaves no residue.

Code:

SW-206 Specialty Film Cleaner 9.5 oz



SPRAY ADHESIVE

For the art studio, print, picture framing, screen print, or signs/display shop, sewing trades personnel, woodworkers, and office and industrial settings. Quick or long tack for temporary or permanent bonds.

Code:

SW-066 Spray Adhesive 11 oz



ANTI-STAT

Counteracts static electricity charges that attract dust; prevent materials from feeding properly or "shock" equipment operators. Helps prevent data loss and damage to a computer's memory. Can also be used on metal rollers, drive belts; scanners, electronic image processors.

Code: **SW-955** 14 oz



GLASS CLEANER

Use to dissolves dirt, grease, grit, and grime. Guaranteed to leave no film. Contains perfume-grade alcohol for best performance and is ammonia-free.

Code: **SW-050** 19 oz



BLANKET FIX

For correcting low spots and dents quickly without removing the blanket from the cylinder.

Code: **BFIX** 4 oz



3M SPRAY ADHESIVES

Super 77 For permanent bonding of most materials including paper, plastics, foams and foils.

Spray Mount 6065 Artist's Adhesive is for short term bonding when making layouts, creating package designs, or photo compositions.

Code: **77** Super 77 13 3/4 oz
6065 Spray Mount 10 1/2 oz



Measurement Tools

DIGITAL THICKNESS GAUGE



The **PTG-D Digital Thickness Gauge** is both economical and highly accurate. It measures from 0 to 0.6 inches or 15 mm. Resolution is 0.0005 inches or 0.01 mm. Clear digital display

Code: **PTG-D** Digital Thickness Gauge

POCKET THICKNESS GAUGE



Easily held in natural grip. Ideal for measurement of plates, packing materials, paper, blankets or wire. Fraction and decimal equivalents on back of case. Dial diameter is 1 7/8". Accuracy is up to .0001". Measuring capacity is .5 inches.

Code: **PTG-1** Thickness Gauge
PTG-M Metric Pocket Thickness Gauge



Designed to accurately measure paper, laminates and plates. Dial face is 2 5/8" in diameter. Lever activated measurement accurate up to 0.001" Measuring capacity is .5 inches.

Code: **PTG-B**

MICROMETER



Range of 0" to 1" with readings of .001". Friction thimble, locking spindle. Ideal for measuring paper, blankets and packing materials.

Code: **M-1**

DOT INSPECTOR

The **Dot Inspector** is the ideal tool to precisely see the various print media outputs. Depending on the magnification, the Dot Inspector will enhance the image by illuminating the viewing area with different color LEDs.

The Dot Inspector is an excellent tool to check printed sheets, plates, and proofs.

Each Dot Inspector comes complete with a carrying case, two AAA alkaline batteries, handy strap, operation manual, and the selected magnifier.

Three models are available depending on the magnification desired.

Code:

DI20	20X (DOT-20X)
DI30	30X (DOT-30X)
DI50	50X (DOT-50X)



CALIPER



Six inch capacity caliper with easy to read dial. Measures accurately up to .001". Tough as steel, super polymid, corrosion resistant. Includes carrying case.

Code: **CALIPER** Dial Caliper



Accurate to .0005/.25 mm. Measures inside, outside and depth. LCD display with automatic power off. Hardened stainless steel with chrome finish.

Code: **CALIPER-D** Digital Caliper

Densitometers, Punches, Wedges, Job Jackets

COLOR REFLECTION DENSITOMETER

Ihara Densitometers utilize advanced microputer technology to ensure superior performance and reliability. The densitometers have commands that are menu driven. The design is upgradeable so you can later increase the capability. Measuring range of density is from 0.00 to 2.500. These units will do approximately 4,000 measurements between charges.

Accuracy is plus or minus 0.02D. Weight is 1.2 pounds. Size is 2 3/4" W, 2" H, and 8 1/4" L.

MODEL R710 The R710 has quick calibration function to measure both density and density difference.



Code: **R710**

MODEL R720 The R720 measures density, density difference, dot area, (Murray-Davies or Yule-Nielson), and dot gain. The auto function will automatically measure density and dot gain.



Code: **R720**

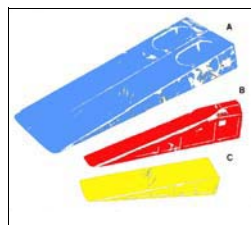
MODEL R730 In addition to the above functions of the Model R720, the Model R730 also measures ink trap, print contrast, hue error, grayness, saturation, cast, brightness, and dot analysis (Print Characteristics Curve). Auto functions include density, dot gain, and ink trap.



Code: **R730**

PILE SEPARATORS

For the leveling of stacked paper. Permits close adjustment and prevents misses, dragging and folding under.



Code:

WEDGE-A 8" x 3 1/4" x 1" rise

WEDGE-B 6" x 3/4" x 1 3/8" rise

WEDGE-C 4 3/4" x 1 1/2" x 1" rise

OFFSET PLATE PUNCHES

PP-25 TABLE TOP STANDARD 25-PIN PUNCH

Table top Standard 25-pin punch. Fits most small presses. Heavy metal base with adjustable side guide. Pins 1/2" center to center spacing. Ideal for paper, polyester, film and metal plates. Shipping Weight: 10 lbs.



Code: **PP-25**

PP-38 TABLE TOP 38-PIN PUNCH

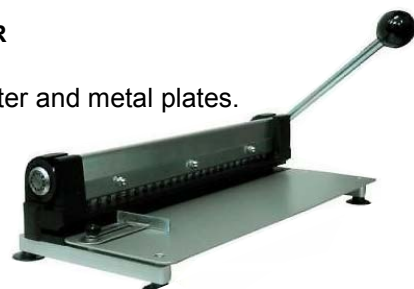
Table top 38-pin punch. Fits most small 38-pin offset presses. Heavy metal base with adjustable side guide. Pins 1/2" center to center spacing. Shipping Weight: 20 lbs.

Code: **PP-38 Offset Plate Punch**

PM-25 PUNCHMASTER

Punches paper, polyester and metal plates. Has 25 pins, 1/2" center to center.

Code: **PM-25**



SHOP TICKET HOLDERS



Heavy-duty vinyl, sealed on three sides, metal eyelet at top for hanging. Great for frequently handled materials. Available in a variety of colors.

Code:

SHT-912 9" X 12" 25/package

SHT-1218 12" X 18" 25/package

Press Supplies

CLEAN-UP SHEETS

Two sided, heavy weight, high wet strength and absorbency, resists tearing. Package contains 100 sheets.

CODE:	PRESS/MODEL:	SIZE:
C-A360	A.B. DICK 360/367	11 1/16" x 18 5/8" PB
C-A9800	A.B. DICK 9800 SERIES	13" x 19 3/8" PB
C-1118	Universal 11 x 18	11 1/16" x 18 1/16" PB
C-R3200MCD-19	RYOBI 3200 MCD-LC ITEK 975 XL	13 5/8" x 19 3/8" PB

PLASTIC SQUEEZE BOTTLES



Durable plastic squeeze bottles for holding a variety of chemicals. These 16 ounce and 32 ounce bottles have "flip-top" caps.

Code: **SQ-16** 16 ounce capacity
SQ-32 32 ounce capacity

BLANKET SCRUBBER



The **Blanket Scrubber** is used for cleaning, loosening, and lifting ink, gum, casein, clay, enamel, varnish, paper lint, and spray powder from the blanket as well as rollers and press frames. The Scrubber is a nylon pocket containing a cellulose sponge that holds a reservoir of solvent.

Code: **BSCRUB**

DUPLICATOR PRINTING PRESS BLANKETS

GENERAL GRAPHIC 3-PLY BLANKETS

Code	Press	Around x Across
A360	A.B. DICK 360	18 1/2" x 10 5/8"
A360-11	A.B. DICK 360 11"	18 1/2" x 11"
A9800	A.B. DICK 9800	19 1/4" x 12 5/8"
H600CD	HAMADA 600CD/660	19 1/8" x 12"
H700	HAMADA 700	16 1/2" x 18"
M1250W	MULTI 1250W	18 5/8" x 10 5/8"
M1250W-11	MULTI 1250W 11"	18 5/8" x 11"
M1360	MULTI 1360/1650	18 7/16" x 12 5/8"
M1850	MULTI 1850	16 1/16" x 17 5/8"

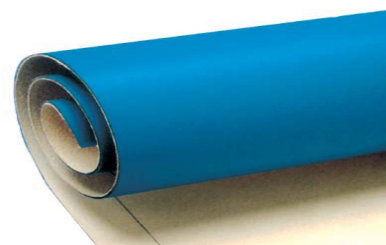
General Graphic 4-Ply Blankets

GTO-46	Heidelberg GTO-46	17 15/16" x 18 1/8"
GTO-52	Heidelberg GTO 52	17 1/2" x 20 1/2"
QM	Heidelberg Quickmaster	21 7/8" x 13 1/4" w/bars

GENERAL GRAPHIC 5-PLY BLANKETS

2800	ITEK 960/RYOBI 2800	18 15/16" x 11 1/4"
2800XL	RYOBI 2800 XL	19 1/2" x 11 1/4"
3200	ITEK 975A/RYOBI 3200	18 15/16" x 12"
3200MCD	ITEK 975M/RYOBI 3200 MCD	18 15/16" x 13"
3200LC	ITEK 975XL/RYOBI 3200 LC	19 1/2" x 12"
3200MCD/LC	RYOBI 3200 MCD/LC	19 1/2" x 13"
3302	RYOBI 3302M W/Bars	19 1/2" x 13 1/2"

Other Sizes Available.



GENERAL GRAPHIC 3 PLY

A high performance compressible offset blanket for sharp dot reproduction and full, rich solids for coated and uncoated papers. The thickness is .067"/1.70 mm. The surface is sky blue in color and micro buffed. The blanket is economically priced.

GENERAL GRAPHIC 4 PLY

Similar blanket material to the 3 ply blanket. Thickness is .077"/1.95 mm. Blue with micro buffed surface. Very long press life at an economical price.

GENERAL GRAPHIC 5 PLY

Specially designed for Ryobi Presses, this 5 ply blanket is .101"/2.55mm in thickness. The blanket is compressible, green in color and has a buffed surface.

Ink Knives and Press

INK KNIVES/SCRAPERS



Code:	L x W (Blade):	
3F-1 1/2	3 1/2" x 1 1/2"	Flexible Ink Scraper
3F-2	3 1/2" x 2"	Flexible Ink Scraper
3F-3	4 1/8" x 3"	Flexible Ink Scraper

INK KNIVES



Code:	L x W (Blade):	
900-4	4" x 1 1/2"	Flexible Ink Knife
900-6	6" x 1 5/8"	Flexible Ink Knife
900-8	8" x 2 1/4"	Flexible Ink Knife

INK SPATULAS



Code:	L x W (Blade):	
5386-8	8" x 2 1/4"	Flexible Ink Spatula
5386-10	10" x 1 5/8"	Flexible Ink Spatula

INK SCRAPERS



Code:	L X W (Blade):	
9806E-3	4 1/2" x 3"	Flexible Ink Scraper
9806E-4	5" x 4"	Flexible Ink Scraper

ROLL KNIFE AND LEATHER SHEATH



High carbon steel, glaze finish, square point, round burnt finish handle. Extremely sharp. Cuts through rubber, plastic, paper, etc. Roll Knife fits into a leather belt sheath which keeps sharp blade concealed while not in use.

Code:	X4X1S	Roll Knife 4" blade
	SHEATH	Leather Sheath

PLASTIC INK KNIVES

All Plastic—Individual

Prevent costly roller damage with these highly visible yellow knives specifically designed for ink handling. The one-piece, solvent resistant polypropylene construction is durable and will not damage rubber, plastic, or Teflon parts.



Code:	Blade Size:	Overall Length:
PK-A	3" x 7 1/2"	13 1/2"

Plastic Ink Knife Set

An inexpensive alternative to wood handle ink knives. Durable polypropylene make these knives tough, flexible and solvent resistant. Flexible blade. Color coded for process color.



Code:	Size:
KP-2	10 3/4" x 2 3/4" 4/set

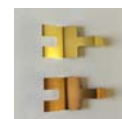
PRESS SUCKERS



ABD-SU	A.B. Dick molded suckers. For all presses with 1/4" bottom tube. 12/Pkg
RYI-SU	For Ryobi presses. 12/Pkg

SHEET SEPARATORS

(Cat Whiskers)



SS-RYI	Ryobi/Itek 12/Pkg
SS-HAM	Hamada/Multilith 12/Pkg

Other sizes available.

Cleaning, Packing and Safety Products

BOX SEALING HAND DISPENSER



Holds 2" roll of packing tape.

Code: **TD-1**

PACKING TAPE

Clear packing tape, 2" wide by 110 yards long.

Code: **PT-2**



CUSHIONED MAILING ENVELOPES

Ideal for USPS, UPS or FedEx shipping. Easy, self-sealing closure, bubble cushioning provides protection. Available in two sizes.

Code:

7913 6" x 9" 10/pkg

7914 8 1/2" x 11" 10/pkg



SCRUBS IN A BUCKET

SCRUBS in-a-Bucket® is the revolutionary pre-moistened hand cleaner. The SCRUBS® citrus-based formula combined with an absorbent, no scratching towel will loosen, dissolve, and absorb soils from your hands.

Code: **SCRUBS**



NO ROLL EAR PLUGS

New no roll design makes insertion easy. Reduced diameter and smooth outer skin provide long term comfort and avoid the stuffed up feeling. The only single use plug that screens harmful noise out but lets voice pass through. Disposable. SNR of 29 db.



Code: **EP-NR**
EP-NRC

10 pair/pkg
200 pair/case

EAR PLUGS W/ CORD

E-A-R Plugs offer custom-fit hearing protection with the convenience of a stay together easy to see blue vinyl cord. Packed 10 pair per package.



Code: **EP-C**

FAST ORANGE Lotion Hand Cleaner with Extra Fine Pumice

Fast Orange hand cleaner quickly removes ground-in grease and grime without abrading skin like coarser pumice hand cleaners. Pure, fresh-scented natural citrus power does the cleaning. Contains aloe, lanolin, jojoba and Corn Huskers Lotion to condition skin.

Code: **25218** 1 gallon



REALLY WORKS HAND CLEANSER

Formulated for the printer, **Really Works** citrus based waterless hand cleanser offers fast clean-up, is non-toxic and non-polluting. Use with or without water. Natural ingredients are gentle and will not dry skin. Available with or without pumice in recyclable 4.5 pound plastic containers.



Code: **RW-NA** 4.5 lb Really Works Non-Abrasive
RW-P 4.5 lb Really Works Pumice

Gloves and Anti Static

VINYL - DISPOSABLE

Chemical resistant, ideal for people who have developed a reaction to latex gloves. Looser fitting than the latex so that hands can breathe. Tear resistant. Available as both **powdered** and **non-powdered**. Comes 100 gloves to a dispenser box.

Code: Size: Powdered:

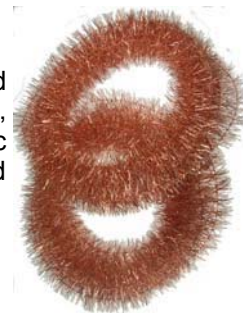
GLOVE-VS	Small		
GLOVE-VM	Medium	GLOVE-VMP	Medium
GLOVE-VL	Large	GLOVE-VLP	Large
GLOVE-VX	Extra large		



ANTI-STATIC TINSEL

Anti-Static Tinsel features solid copper bristles and offers a safe, low-cost method of eliminating static electricity. Box contains two 12 yard rolls of tinsel.

Code: **TINSEL**



LATEX - DISPOSABLE

General Graphic latex gloves are strong medical grade latex. Lightly powdered. Packaged 100 gloves to a dispenser box.

Code: Size: Code: Size:

GLOVE-M	Medium	GLOVE-X	Extra large
GLOVE-L	Large		



ANTI STATIC SPRAY

Counteracts static electricity charges that attract dust; prevent materials from feeding properly or "shock" equipment operators. Helps prevent data loss and damage to a computer's memory. Can also be used on metal rollers, drive belts, scanners and electronic image processors.

Code **SW-955** 14 oz.



NITRILE - DISPOSABLE

Disposable Nitrile gloves are resistant to most solvents except ketones and acetone. Gives excellent protection. Precise, comfortable fit reduces hand fatigue. Packaged 100 gloves to a dispenser box.

Code: Size: Code: Size:

NIT-S	Small	NIT-L	Large
NIT-M	Medium	NIT-X	Extra large



AIRUG ANTI FATIGUE MATS

Provides basic anti-fatigue protection with PVC closed cell foam 3/8" thick. Relieves leg and back discomfort and provides a barrier to cold floors. All four sides are beveled to minimize trip hazards.



NITRILE - REUSABLE

Strong green Nitrile gloves with non-slip grip surface and soft lining. Offers same protection as disposable.

Code: Size: Code: Size:

NBR-S	Small (pair)	NBR-L	Large (pair)
NBR-M	Medium (pair)	NBR-X	Extra large (pair)



NEOPRENE - REUSABLE

Resists oils, acids, caustics, wax, alcohol, and solvents. High tensile strength. Resists abrasions and cuts. Embossed non-slip grip. Bacteriostatic lining retards perspiration odor.

Code: Size: Code: Size:

NP-M	Medium (pair)	NP-X	Extra large (pair)
NP-L	Large (pair)		



DIAMOND STAT ANTI STATIC/ANTI FATIGUE MATS

Diamond Stat mats provide maximum effectiveness against static electricity. Each mat comes with a grounding cord. Constructed of durable vinyl plate top surface on a dense closed cel foam base giving the mat a total thickness of 9/16". In addition to antistatic, the Diamond Stat mats also provide excellent anti-fatigue support. Surface is textured for anti slip.



Code:	Size:	Code:	Size:
826DS2436	24" x 36"	826DS312	3' X 12'
826DS3660	36" x 60"		

Perfect Binding and Padding Presses

PB-2000T PERFECT BINDER

The **PB-2000T Tabletop Perfect Binder** produces professional perfect bound books with the touch of a button. The PB-2000T provides superior capacity with the ability to bind books up to 1.44" thick and 12.75" long. It has a production speed of up to 140 books an hour and allows you to create your own soft cover books in as little as 25 seconds each.



Milling the spine of the book allows glue to better adhere, creating durable professional books. Features include digital temperature and auto or manual cycle times. Its compact design and easy operation make it an excellent machine for office or print environment.



Code: **PB-2000T**



Maximum document thickness	1.44"
Maximum document length	12.75"
Binding speed per book	25-30 seconds
Paper range	20# to 110# (up to 10 pt) cover stock
Dimensions	21 3/4"(w) x 23 1/2"(d) x 10 3/4"(h)
Weight	Weight 120 lbs. Ship weight 155 lbs.
Power requirements	110 volt 50/60 htz 1050W
Warm up time	20 minutes

PADDY WAGON PADDING PRESS

PADDY WAGON design eliminates the mess associated with pad production. Integral shelves store all your padding equipment and doubles as a spill apron to catch excess padding compound. Table edge and clamping bar are designed to reduce compound buildup. Excess compound is easily removed with your padding knife.

Code: **PADDY-WAGON**



Maximum Lift Height: 31"
 Maximum Lift Width: 23-1/2"
 Lift Depth: 3" to 17"
 Capacity Example: 15,000 8-1/2" x 11" 20# bond
 Pass-thru Door Size: 32" / 80 cm
 Overall Base Area: 30" x 30"
 Overall Height: 66-1/2"
 Net Weight (approximate): 100 lbs.
 Shipping Weight (approximate): 120 lbs.
 Ships via truck.

PAD ABOUT PADDING PRESS

This versatile unit maximizes shop space and pad production. The **Pad About** pads up to 10,000 11" wide sheets. Convenient rotating table eliminates the need to lift paper stacks. Stand allows for moving padding unit to where job is or moving out of the way when not in use. Constructed of 3/4" select white maple with welded steel frame and quality casters.

Overall dimensions:
 60"H x 28"W x 24"D.
 Shipping weight: 115 lb.
 Ships UPS/FedEx

Code: **PAD-ABOUT**



Padding Presses

PRODUCTO PAD PADDING PRESS



The table-top version of the **Pad About**. Maximizes production space by sitting on counter. Can pad up to 10,000 sheets 11" wide. Constructed of 3/4" select white maple wood. Overall dimensions: 30"H x 28"W x 18"D. Shipping weight: 54 lb.

Code: **PRODUCTO**

ULTRA PAD PADDING PRESS



Heavy duty padding press with durable quick release cast iron clamps. The 360°rotation allows for high production while using a minimum of counter space. The **Ultra Pad** holds 10,000 8 1/2" wide sheets. Constructed of white maple for added strength. Overall dimensions: 30"H x 22"W x 15"D. Shipping weight: 43 lb.

Code: **ULTRA-PAD**

MINI PAD II

The **Mini-Pad II** is a compact table top version of the industry standard Ultra Pad padding press designed for those locations with limited counter space. Small foot print requires a minimum of operating space for use and easy storage when padding job is complete. Features easy to use pressure clamps and 360 degree swivel for easy access without lifting padding stack.



Code: **MINI-PAD**

Paper Capacity	3000 sheets
Dimensions	17"(w) x 11 1/2"(d) x 22"(h)
Weight	Weight 15 lbs. Dimensional ship weight 45 lbs.

PP-2 PAD PRESS



An economical, efficient, easy to use padding press. Pads up to 8,000 8 1/2" wide sheets at one time. Press is tilted backward to allow for jogging of paper. Overall dimensions: 26"H x 25"W x 16"D. Extra pressure units available for added output.



Code: **PP-2** 20 1/2" Padding Press

PP-1 PAD PRESS

The **PP-1** pads up to 4,000 8 1/2" x 11" sheets of paper or 8000 5 1/2" x 8 1/2" sheets. This is ideal where padding jobs tend to be small and counter space is a factor. Can be purchased with padding supply starter kit that includes pad adhesive, and chip board.



Code: **PP-1** Pad Press
PP-1S Pad Press with Starter Kit

Padding Supplies

GENERAL GRAPHIC PAD ADHESIVE

A pure synthetic resin adhesive for padding all grades and weights of paper, with or without backing. Recommended for use with all General Graphic Padding Presses. Non-hazardous. Available in white or red.

Keep from freezing.



Code: White:
PA-QW
PA-GW

Quart
Gallon

Red:
PA-QR
PA-GR

MAGIC GLUE FAN-A-PART PAD ADHESIVE

Universal carbonless pad adhesive for NCR, 3M and Mead forms. Separates easily. Recommended for all General Graphic Padding Presses.

Code: **MG-Q** Quart
MG-G Gallon



PAD COUNTERS



Adjustable pad counter available in 2" or 5" capacity. Set tongue depth to desired thickness and insert into pad.

Code: **PADCT-2** 2" capacity
PADCT-5 5" capacity

PAD BRUSHES



Soft bristle brush makes padding easy. Available in two sizes.

Code: **PB-1** 1" wide
PB-2 2" wide

PAD KNIFE



Specially made for cutting pads. Extra-thin oyster shaped blade with wood handle.

Code: **101K-3**

PADDING KIT

An excellent starter kit when purchasing a new padding press. Contains all the tools necessary to pad. Includes one quart of white padding adhesive, a pad knife, pad brush and 2" pad counter.



Code: **PAD-KIT**

QUICK-AS-A-WINK PAD COUNTER



Instantly divides pads into five equal parts. Maximum thickness of 2-1/2".

Code: **QUIKCT**

PADDING CHIPBOARD

Quality .024 point chipboard used for interleaving of pads. Available in two sizes.



Code: **CB-8** Chip Board 8 1/2" x 11" 480 sheets/pkg
CB-11 Chip Board 11" x 17" 240 sheets/pkg

Paper Stock Cart and Utility Trucks

PAPER STOCK CART



The **Paper Stock Cart** is the ideal tool to move paper around from copier to finishing equipment, from cutter to folder. The four trays hold sheets up to 11" X 17" in size. Center angled shelves assist in jogging paper. Handles allow for easy movement. Holds up to 20" high stacks in each of its four bins. Heavy duty casters have 500 pound capacity. Comes with two locking casters to stabilize fully loaded cart. Attractive office gray finish. Shipping weight is 98 pounds. Ships via truck.

Code: **PSC-1**
PSC-1A Ships assembled

STOCK RACK

16 TRAY

SIZES 14" X 20" AND 17" X 22"



Functional, portable shelf drying racks made for larger presses. Printed sheets are never touched as they are removed from the delivery dolly. The 14" x 20" Stock Rack is 22" wide, 28" deep and 63" high. Shipping weight is 133 lb. The 17" x 22" Stock Rack is 25" wide, 35" deep and 63" high. Shipping weight is 165 lb.

Code: **DR-1** 14" x 20"
DR-2 17" x 22"

DUPLICATOR TRUCK

8 TRAY - 12" X 18"



For all 11" x 17" printing presses. The portable drying/storage rack has eight 12" x 18" removable shelves. This allows printed material to be transferred from press to rack without being touched by hands. Rolls easily, even when filled to capacity. Rugged construction of welded square tube steel. Heavy-duty casters, two with brakes for stability. Overall size, 28" wide, 18" deep, and 48" high. Shipping weight 110 lb.

Code: **DT-8**

DUPLICATOR TRUCK

20 TRAY - 12" X 18"



The most practical and functional pressroom drying and storage rack built. It holds twenty delivery dolly-size 12" x 18" trays. Place a tray in the Duplicator delivery dolly and run press. When tray is filled it is returned to the rack. Another tray is placed in the delivery dolly and the process is repeated. Overall size 28" wide, 36" deep and 63" high. Shipping weight 130 lb.

Code: **DT-20**

Paper Drills

FP-IVT Multi Spindle Electric Paper Drill



The **FP-IV** series is available as either automatically descending or hand operated. Available in 2, and 3 spindle models.

With the 2 hole version, both heads are adjustable. With the 3 hole version, the center head is fixed and the outer two heads are adjustable from 2 1/4" to 4 3/4". The table has self centering guides for placement of paper. Back margin is adjustable up to a 3 1/2" depth. Table size is 18 1/4" x 14 3/8". Paper drills are available from 1/8" (3 mm) to 3/8" (9 mm) in diameter with cutting capacity up to 2 1/2" (60 mm).

The drill comes equipped with a moving table that has two stop bars. The first stop bar has adjustable stops so that if drilling jobs with more than 3 holes, it can be set up to accommodate these jobs. The preprogrammed bar has settings for two stops (6 hole) and 12 stops (36 hole).



In addition, the **FP-IV-Auto** has a unique design. The belt driven spindles are powered by three 1/4 horse power motors. The up and down movement of the head is driven by a 3/4 horse power electric motor. Heads are activated by two safety push buttons located on the front control panel.

Power: 110 V

Table Size: 18.4" W X 12.8" D X 16" H

Shipping Weight: FPIVA 190 lb. FPIVT 145 lb.

Code: **FPIVA** Three Spindle Automatic Drill
FPIVT Three Spindle Hand Operated Drill

FP PAPER DRILL

There are three models of the **FP60 Paper Drill**; the **FP60**, the **FP60-LS**, and the **FP60-LS-Auto**.

All models can drill up to 2 1/2" of paper at one time. As a standard safety feature, the motor is only in operation when the drill handle is lowered for drilling.

The **FP60 Drill** is economically priced, but still capable of doing most drilling jobs. The FP60 comes with a standard table and uses Style "F" drill bits available in sizes 1/8", 3/16", 1/4", 5/16" and 3/8" (measured in millimeters).

The **FP60-LS Drill** is equipped with an adjustable stop-gauge to allow drilling for customized or standard hole patterns. The drill is also equipped with a pre-programmed bar so that drill stops are already set for standard drilling patterns. These include single hole, two hole, and three hole patterns. Just press the table release to move the paper to the next stop. The FP-60-LS uses Style "A" drill bits available in sizes from 1/8" to 1/2" in 32nd inch increments.

The **FP60-LS-Auto Drill** has the added feature of powered descent by the drill head. This is controlled by an additional 1/2 HP motor which is activated by two safety push buttons.

Specifications:

Power: 110 V

Table Size: 18.4" W X 12.8" D X 16" H

Shipping Weight FP60/FP60LS: 90 lb.

Shipping Weight FP60LS-Auto 125 lb.

Code: **FP-60**
FP-60LS
FP-60LS-A



General Graphic Drill Bits

General Graphic carries a full range of drill bits for most paper drills manufactured today. General Graphic Drill Bits are made of tempered steel to **maintain sharpness** and **prevent clogging**.

GENERAL GRAPHIC/CHALLENGE STYLE "A"



Fits all **Style "A"** drills including Challenge, General Graphic FP60LS, Mark-3 and Skylab models, Lassco, Graphic Products, Ottawa, Superspeed, and some Rosback drills. Sizes from 1/8" to 1/2" diameter in increments of 1/32". Drill capacity may be less than 2" on smaller diameter drill bits (sizes less than 1/4").

Code:	Diameter:	Code:	Diameter:
DBA1-8	1/8"	DBA5-16	5/16"
DBA5-32	5/32"	DBA11-32	11/32"
DBA3-16	3/16"	DBA3-8	3/8"
DBA7-32	7/32"	DBA13-32	13/32"
DBA1-4	1/4"	DBA7-16	7/16"
DBA9-32	9/32"	DBA1-2	1/2"

Extended (2 1/2" capacity) drill bits for Challenge multiple-head drills, Challenge Handy Drill, General Graphic FP60LS, and some Lassco Spinnet drills. Now available in some millimeter sizes.

DBA1-4L	1/4"	DBA1-2L	1/2"
DBA5-16L	5/16"	DBA-6.5L	6.5 mm
DBA3-8L	3/8"	DBA-8L	8.0 mm

For the FP-100LS and FP100LS-Auto Model Drills an extended Style "A" drill bit is used. FP-100LS drill bits are available in millimeter sizes only.



Code:	Size
DB-FLS100-14	6.5 mm x 90 mm
DB-FLS100-516	8.0 mm x 104 mm
DB-FLS100-38	9.0 mm x 104 mm

TEFLON COATED DRILL BITS STYLE "A"



Teflon coating allows for smoother operation. Eliminates clogged drill bits and the use of wax. Fits same drills as **Style "A"** drill bits.

Code:	Diameter:	Code:	Diameter:
TCB-18	1/8"	TCB-516	5/16"
TCB-316	3/16"	TCB-38	3/8"
TCB-14	1/4"	TCB-12	1/2"

Extended 2 1/2" capacity.

TCBL-14	1/4"	TCBL-38	3/8"
TCBL-516	5/16"	TCBL-12	1/2"

MODEL FP-60 AND 100 STYLE "F"



Style "F" specifically designed for the General Graphic Model FP-60 and FP-100 Paper Drill. FP-60 bits available with Teflon coating. *Drill Bits are manufactured in metric; measurements in inches are the closest approximation.*

Code:	Size	Code:	Size:
DB-F1-8	1/8" (3 mm)	DB-F3-16	3/16" (4.5 mm)
DB-F1-4	1/4" (6.5 mm)	TCB-F1-4	Teflon
DB-F5-16	5/16" (8.0 mm)	TCB-F5-16	Teflon
DB-F3-8	3/8" (9.0 mm)	TCB-F3-8	Teflon

Extended lengths for FP100 and FP-IV 3 Spindle Drills.



DB-F100-14	6.5 mm x 90 mm
DB-F100-516	8.0 mm x 104 mm
DB-F100-38	9.0 mm x 104 mm

Drill Bits and Sharpeners

BAUM/NYGREN DAHLY



Style "C" for Baum/Nygren Dahly drills with 2" capacity.

Code:	DB-C1-8	1/8"
	DB-C5-32	5/32"
	DB-C3-16	3/16"
	DB-C1-4	1/4"
	DB-C5-16	5/16"
	DB-C3-8	3/8"
	DB-C1-2	1/2"

EURO STYLE



Style "E" for European style drill including Uchida, MBM, Standard Citoborma and Corta.

Code:	DB-E1-8	3.5 mm x 40 mm
	DB-E1-4	6 mm x 50 mm
	DB-E5-16	8 mm x 50 mm
	DB-E3-8	9 mm x 50 mm

LAWSON



Style "B" Lawson Drill Bits with 2 1/4" capacity.

Code:	DB-B1-4	1/4"
	DB-B5-16	5/16"

MARTIN YALE/LIHIT/IMPERIAL

Style "J" for Martin Yale 101 and Lihit drills. Drilling capacity is 3/4".



Code:	DB-J1-4	1/4"
-------	----------------	------



Style "K" for Martin Yale 202, Imperial, and Lihit Drills. 2" capacity.

Code:	DB-K1-8	1/8" (3 mm)
	DB-K3-16	3/16" (4.5 mm)
	DB-K1-4	1/4" (6.5 mm)
	DB-K5-16	5/16" (8 mm)

LASSCO-SPINNET



Style "L" for Lassco-Spinnet drills with 1" capacity.

Code:	DB-L1-4	1/4"
	DB-L5-16	5/16"
	DB-L3-8	3/8"

Before ordering be sure to note your model. Many Lassco Drills use the 2" capacity bit (same as Style "A").

LIL-BIT DRILL SHARPENER



Designed for most single-spindle drills. Place sharpener under drill bit and bring down drilling head. No need to remove drill bit. Magnetic base for convenient storage and immediate availability. Not for use on hydraulic drills. Replacement sharpening head with new magnetic base available.

Code:	
LIL-BIT	Drill Sharpener
LB-HEAD	Replacement head w/magnetic base

C-THRU DRILL SHARPENER



A simple two-piece tool that sharpens style "A" hollow drill bits. The drill bit is placed in chuck and sharpened to correct level with just a couple of twists. Also includes built in chip remover. Heavy steel construction to ensure many years of service.

Code:	D-SHARP	Drill Sharpener
	SHABT	Replacement sharpening bit

Drill Blocks and Accessories

DRILL BLOCKS

Code:	Size:	Drill Mfg/Mdl:
DBL-1	1 1/2" diameter x 3/4" thick	Challenge H/JO/JF Lassco EBM-S
DBL-2.5	2 1/2" diameter x 1/4" thick Fiber	Challenge EH
DBL-3	3" diameter x 3/4" thick	Challenge EH-3A/C
DBL-5	1 1/4" x 6" x 3/8"	Challenge BaumNygren-Dahly
DBL-FP	1 3/16" x 13 3/4"	FP-60/FP60LS
DBL-FPIV	1 1/8" x 18"	FP-100IVT/IVA
DBL-13814	1 3/8" diameter x 1/4" thick	Mark 3/4
DBL-13834	1 3/8" diameter x 3/4" thick	Baum ND-1
DBL-I-Pad	11 3/4" x 2 3/8"	Imperial Martin-Yale 202
DBL-101	11 3/4" x 1 1/16"	Imperial, Martin Yale 101



Code:	Size:	Drill Mfg/Mdl:
DBL-UCH	1 9/16" diameter x 1/8" thick	Uchida
DBL-LASB	2" x 16" x 7/16"	Lassco EBM-2, EMB-5
DBL-LAS25	2" x 25" x 7/16"	Lassco FMM
DBL-LAW	8 1/2" X 1 1/8" x 3/8"	Lawson
DBL-LAWB	24" x 1 1/8" x 3/8"	Lawson

DRILL DRIFTS

Tools for removing tapered drill bits from the drill chuck. Four styles to choose from.



Code:	
DD	Challenge/Lassco/Mark III
DD-T	Challenge/Lassco/Mark III T-Shaped
DD-FP	FP-60 Drill
DD-FP-LS	FP-60LS Drill

DRILLEASE



Stick lubricant for drill bits. Prevents burning and clogging. Lengthens life of drill bits. Touch lightly on tip of drill bit so wax travels up inside of shaft.

Code: **DRILL-E**

HOLLOW DRILL CHIP REMOVER

Use to remove paper chips from hollow drills. Just place under the drill bit and manually bring down drill head. Works on sizes from 3/16" to 1/2".



Code: **CR**

Rapid Staplers, Accessories and Supplies

RAPID 106 STAPLER

The **Rapid 106 Stapler** is the industry standard for print and copy shops. The flexible design allows for either flat stapling or saddle stapling for booklets. The 106 stapler can staple sets from 2 sheets to 20 sheets (saddle), or 40 sheets (flat) of standard bond paper. Stapler can be triggered either by convenient foot pedal or depth adjustable triggers. Side guides allow for precise staple location.

Shipping weight 17 lb.

Code: **106E** Rapid 106E Electric Stapler

Replacement Parts for 106E/101E

Code:

106-HEAD

Replacement stapling head 106E

101-HEAD

Replacement stapling head 101E



The **Rapid 106E Staplers** have the ability to be ganged together so that more than one stapler can be activated at once. Besides the staplers, the accessories needed are either the Saddle Runner or two Narrow Tables, and an Optic Cable to connect the Staplers. As a convenience these items can be purchased as a kit when ganging two 106E Staplers together.

Code:

RUNNER

For saddle stapling only.

OPTIC

Cable to connect staplers.

NT

Narrow 2.4" table for flat or saddle

RO-KIT

Includes Runner and Optic Cable

NTO-KIT

Includes two Narrow Tables and Optic Cable



STAPLES FOR RAPID STAPLER



Designed for use in electric staplers. Chisel point and extra strong wire help eliminate jamming. Used for flat and saddle stapling in the Rapid

100, 101, 105, and 106 staplers. The 1/4" staples can be used in booklet makers utilizing the Rapid Stapling Head such as the Plockmatic or the Rapid Long-Reach stapler. Three brands to choose one. All staples 5000 per box.

Code: **210-1-4**
210-5-16
26-6
666-8

1/4" Red Streak
5/16" Red Streak
1/4" Rapid
5/16" Premium

RAPID 105 STAPLER

An electric stapler for office and packaging stapling. Narrow design allows two or more staplers to be connected with a fiber optic cable for stapling simultaneously. Patented electronic controlling, pneumatic damping which gives quiet sequence of operation. The **Rapid 105E Stapler** can be triggered either by foot pedal or depth adjustable triggers.

Code: **105E**



Staplers and Staples

RAPID 49 STAPLER



Staples up to 170 sheets of paper. Steel frame construction. Uses staple sizes from 5/16" to 3/4". Adjustable throat depth to 2 3/4". Uses Rapid Staples 9-8, 9-10, 9-12, 9-14, 9-16 and 9-20. Economically priced.

Code: **49**

PLOCKMATIC STAPLE CARTRIDGES

Plockmatic Staple Cartridges hold 5000 staples. Designed for Models 75, 88, and 102 Booklet makers. Will also fit the Xerox ASF 92 and ASF 135, MBM 7500, 8800 and DocuTech 102.



Staple Cartridge for use in the Plockmatic BM15 booklet maker.

Code: **PL-CART** 5000 STAPLES
BM-CART 2000 STAPLES



RAPID 9 STAPLER

A rugged and durable heavy duty stapler. Adjustable throat depth up to 3 1/2". Easy staple back load system. Will staple up to 100 sheets 20 lb. bond. Uses Rapid Staples 9-8, 9-10, 9-12, and 9-14.



Code: **9**

SCCR STAPLES

For Bostitch EHFS Staplers and other staplers with the 62 Head. Box contains 5000 staples.

Code: **SCCR25.1-4** 1/4" length
SCCR25.3-8 3/8" length
SCCR25.1-2 1/2" length
SCCR25.9-16 9/16" length



STAPLES - RAPID 49/RAPID 9

Code:

9-8	5/16" length	5000/box
9-10	3/8" length	5000/box
9-12	1/2" length	5000/box
9-14	9/16" length	5000/box
9-16	5/8" length	5000/box
9-20	3/4" length	1000/box



LONG REACH STAPLER



Long reach steel frame hand stapler with locking adjustable throat. Convenient holes drilled in frame for attachment to a counter for self-service use. Uses code **210-1-4** 1/4" and **210-5-16** 5/16" staples.

Code: **12-12** 12" throat depth

SPRINT BOOKLETMAKER STAPLE HEAD

Replacement head for Sprint Bookletmakers.

Code: **SPRINT-HEAD**



STAPLER STANDS



Portable mounting stand to accommodate Rapid 101 and 106 Electric Staplers. Telescope construction offers simple height adjustment for sitting or standing position. The ES-200 accommodates two Rapid 106 Staplers ganged together.

Code:
ES-100 Single Stand
ES-200 Double Stand

Finishing Equipment and Wire

ELECTRIC STAPLER 5080E

Offers trouble free stapling due to patented Cassette Stapling Technology. Staples 5,000 times without reloading and regardless of number of sheets. Available with optional foot pedal.



Features

- Capacity: 80 sheets (80 gsm paper)
- Wearing parts replaced with each new cassette
- Adjustable stapling depth up to 50 mm
- One cassette (5,000 staples) included

Code: **5080** Rapid 5080 Stapler
5080-F Rapid 5080 Foot Pedal

RAPID STAPLER CARTRIDGES

Replacement cartridges available for both the Rapid 5080 and Rapid 5050. The 5050 cartridge can also be used with some MBM Booklet Makers. 5000 staplers per cartridge.



Code: **5080-C** Rapid 5080 Stapler Cartridge
5050-C Rapid 5050 Stapler Cartridge

RAPID 31 STAPLER

The **Rapid 31** has interchangeable anvils for sealing padded bags, boxes, sacks and other light packages. Easy to load and clear jams, the all steel stapler has a nickel finish and finger stop for added comfort. Uses staples from 5/16" to 1/2" in size.



Code: **R31** Rapid 31 Stapler
73-8 Staples 5/16" 5000/pkg
73-10 Staples 3/8" 5000/pkg
73-12 Staples 1/2" 5000/pkg

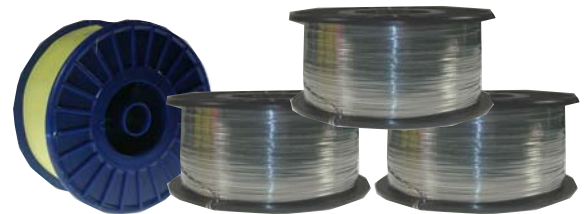
BOOKLETMAC BOOKLET MAKER

The **BookletMac** is a semiautomatic booklet maker for producing professional booklets quickly and easily. The Booklet-Mac staples and folds in a single operation. Capacity is 20 sheets of 20 lb bond for books up to 80 pages. Can make booklets from letter, legal and 11" x 17" paper. Can produce up to 800 booklets per hour.



Code: **BOOKMAC**

STITCHING WIRE



High quality galvanized wire for superior stitching jobs. Available in both round and flat on five pound spools. The #25 wire is on a narrow plastic spool which is ideal for use on the BinderyMate. Other sizes available.

Code: **WI-25** #25 round
WI-24 #24 round
WI-2024 #20 x 24 flat
WI-2025 #20 x 25 flat
WI-2125 #21 x 25 flat

RAPID 23 STAPLER

The **Rapid 23** is an extremely durable tacker for fine wire staples. Suitable for securing thin materials, such as fabrics, paper and labels, and other tasks that need only short staples. Ideal for use with wide format material.



Code: **R23** Stapler
13-6 1/4" Staples 5000/pkg
13-8 5/16" Staples 5000/pkg

FP SERIES PAPER HOLE PUNCHES

MODEL FP-1XLS

The **FP-1(X)LS** uses hollow bits to punch up to 300 sheets at one time. Table slides to position set by adjustable stops. These stops allow for set-up of two, three or four hole punching. Punch bits are available in sizes 3/16", 1/4", 5/16" and 3/8". Handles up to 14" wide paper. Margin depth adjustable from 0" to 1 3/8". Shipping weight 15 lbs.



Code:

FP-1XLS Manual Hole Punch w/movable table

MODEL FP-1(B)

The **FP-1(B)** has a punching capacity of 300 sheets of paper. Ideal for punching where one or two holes are needed. Punch bits range in size from 1/8" to 5/16". Adjustable back margin from 0" to 1 3/8". Shipping weight 8 lbs.

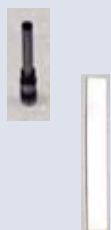


Code:

FP-1B Manual Hole Punch

FP-1XLS PUNCH BITS AND PADS

CODE:	SIZE:
FP-PLS-316	3/16" Hole Punch (4mm)
FP-PLS-14	1/4" Hole Punch (6.35 mm)
FP-PLS-516	5/16" Hole Punch (8 mm)
FP-PLS-38	3/8" Hole Punch (9 mm)
FP-PP	Plastic Punch Pads (3/Pkg)



FP-1B PUNCH BITS AND DISCS

FP-P-18	1/8" Hole Punch (3 mm)
FP-P-316	3/16" Hole Punch (4 mm)
FP-P-14	1/4" Hole Punch (6 mm)
FP-P-516	5/16" Hole Punch (8 mm)
FP-P1	Plastic Punch Discs (3/pkg)



FP-1(PLUS)

In addition to using the same punching bits as the **FP-1(B)**, the **FP-1 (Plus)** includes a thumb cut for calendars or any job that requires half circles to be cut along the edge. Blade size is 20 mm or a little over 3/4". Shipping weight 10 lbs.



Code:

FP-1P Manual Punch/half circle

SFP-II 3-HOLE PAPER PUNCH

The **SFP-II** is a heavy duty 2, 3 or 4 hole punch capable of punching 300 sheets of 20 lb. bond at one time. Long lasting replaceable punch bits comes in sizes from 1/8" to 3/8". Three hole punching is at 4 1/4" centers. As an option 4 holes can be punched with 80 mm centers. Back gauge is adjustable. From 1/8" to 9/16". Shipping weight is 40 lbs.



Code: **SFP-II** Heavy Duty Punch

FP-HBC	Half Circle Thumb Cut Blade
FP-P1	Punch Discs (3/pkg)



SFP-II PUNCH BITS AND PADS

CODE:	SIZE:	CODE	SIZE:
SFP-3	3.5 mm Punch Bit (1/8")	SFP-6	6 mm Punch Bit (1/4")
SFP-8	8 mm Punch Bit (5/16")	SFP-9	9 mm Punch Bit (3/8")
SFP-P	Plastic Punch Pads (3/pkg)		

Punch and Binding

DUO 35 TWO-HOLE PUNCH & BINDER

The **Duo-35** is a two hole binding system that allows for the binding of books, documents, or legal briefs up to 350 sheets (1 1/2") thick.



Place the plastic binder on the DUO-35 table. Position document on top and punch. Insert proper size binding rivets into holes and place plastic binder on top. Bring handle down to secure binding rivets. Rivets have an added advantage over typical binding posts in that they are hollow and can be placed in arch file.



Starter unit comes complete with four lengths of binding rivets and plastic binding strap.

Code: **DUO-35** Dual Hole Binding Machine

Code:	Rivet Size/Sheets:	Code:	Rivet Size/Sheets:
R1	2-30 shts/1000 pkg	R6	200-240 shts/100 pkg
R2	30-50 shts/500 pkg	R7	240-290 shts/100 pkg
R3	50-90 shts/300 pkg	R8	290-350 shts/100 pkg
R4	90-140 shts/200 pkg	PW	Plastic Binder (100)
R5	140-200 shts/150 pkg	MW	Metal Binder (100)

SCB-80 PLASTIC COMB BINDER



The **SCB 80 Comb Binder** is unique in that it uses rectangular hollow punch bits that allows punching 80 sheets at one time.

The SCB-80 has 7 punches (requiring 3 punch cycles). Paper movement is accomplished by simple knob rotation. Includes spreader for binding books up to 2" thick. Weight 50 lbs.

Code: **SCB-80** 80 sheet capacity

RBX-N80 COIL BINDER



Capable of punching up to 130 sheets at one time the **RBX-N80** will punch both letter and A-4 sizes. Punch pattern is 4:1 with round holes.

Code: **RBX-N80** Coil Binding Machine
RBX-N80P Replacement Punches
RBX-N80PP Plastic Punch Pad (3/pkg)

MANUAL TWIN LOOP WIRE CLOSER

Can close a maximum of 18" length of wire, with wire sizes from 1/4" to 1 1/4".



Code: **MWC**

COINER-340 COIL INSERTER

The **CoiNer-340** Coil Inserter is an automatic desk top coil inserter that is capable of inserting coil into books up to 150 sheets. The machine is equipped with four interchangeable mandrels dependent on the size of coil used. It features margin hole adjuster and a "C-Form" paper stop to jog the paper for easy insertion. Interchangeable coil to hole guide so that you can do 3:1 or 4:1 coil. Maximum binding length is 13". The CoiNer-340 features speed control, forward and reverse switch and driving wheel pressure regulator.



Code: **C340**

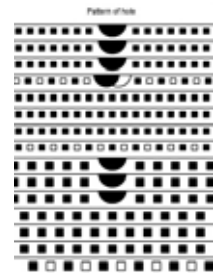
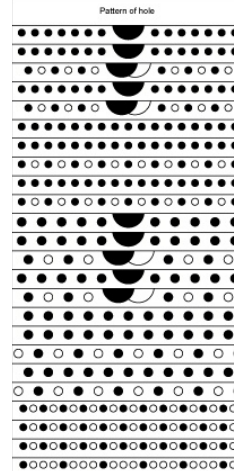
CBX-100 DESKTOP AUTOMATIC PUNCHING MACHINE

The **CBX-100** is the world-first desktop heavy duty punching machine with innovative hollow punch bits that allow punching up to 100 sheets (80gsm, 20lb) at a time. The CBX-100 comes with your choice of a wide range of punching dies. Dies available for common patterns including 2:1 and 3:1 round or square, 4:1 coil round or oval, comb and 3 hole punching. Dies are interchangeable so machine is not limited to one hole pattern. Dies can also come with half moon for calendar punching. The CBX-100 is constructed of heavy cast iron. Hollow punch bits on the dies can be replaced quickly and simply. Equipped with two button control and micro sensors for safety.

SPECIFICATIONS:

- Max. Punching Capacity: 100 sheets of 20 lb. paper
- Max. Punching Length: up to 14"
- Weight: 281 lbs. (net)
- Dimension: 512 mm (W) x 514 mm (D) x 550 mm (H)
- Power: 400 watts, 110/220/230V

Code: **CBX-100**



EBX-50 MULTI PUNCH

The **EBX-50 Punch** comes equipped with four punching dies. It has punches for 4:1 Coil, 3:1 and 2:1 Wire, and Comb. Up to 50 sheets of paper can be punched at one time without paper fusing together. Hollow bits are replaceable and easily punch cardboard or PVC cover sheets. Wire punches are available in square or round. Comes with wire hanger and closer.



Specifications:

- Punching bits :
- | | |
|-------------------|--------------------------|
| 4:1 Round, 4.0 mm | 3:1 Square, 4.2 x 4.2 mm |
| 3:1 Round, 4.5 mm | 2:1 Square, 5.5 x 5.5 mm |
| 2:1 Round, 5.3 mm | Comb, 3.5 x 8.0 mm |
- Stroke Duration: 1.3 sec / cycle.
- Punching pitch: 3:1 - 49 Hole maximum
2:1 - 33 Holes maximum
Comb - 29 Holes.
- Back margin: 2.0 mm ~ 5.0 mm
- Twin ring wire capacity: 6.4 mm ~ 35.0 mm
- Dimension: 32" (W) x 27" (D) x 50" (H)
- Weight: 330 lbs.

Code: **EBX-50**

S360E SEMI AUTOMATIC PUNCH WITH INTERCHANGEABLE DIES

The **S360E Punch** has a punching width of 14" and a punching capacity of 25-35 sheets depending on the die. Punching is vertical with automatic ejection on to paper tray after punching. Punching margin is adjustable and all punch pins are disengagable.

Comes with foot pedal control and one die. Dies available are 4:1 coil, 2:1 and 3:1 wire available in round and square, and comb. Weight: 100 lbs. Power 110 AC



- | | |
|--------------------|---------------------|
| Code: S360E | Table Top Punch |
| S360E-41 | 4:1 Die Round |
| S360E-41O | 4:1 Die Oval |
| S360E-31R | 3:1 Die Round Pins |
| S360E-31S | 3:1 Die Square Pins |
| S360E-21S | 2:1 Die Square Pins |
| S360E-C | Comb Die |

Shredders and Supplies

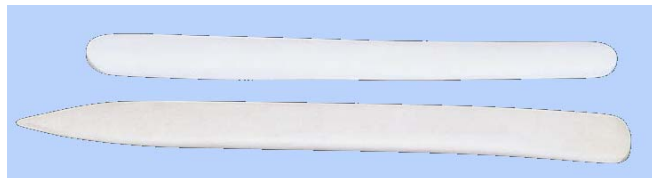
COIL CRIMPERS



Cuts and crimps coil sizes from 5 mm to 33 mm. Recommended for use with coil inserters that do not have automatic crimping. Red dot facing upward indicates the proper position for crimping. Longer crimp length prevents coil from unwinding out of book.

Code: **CRIMPER**

FOLDING BONE



Used for creasing/folding paper. Ideal when you need to fold sets. Strong and durable. Available in 8" to 9" and 6" lengths, or 8" with one end pointed.

Code: **BONE-8-9** 8"-9" rounded
BONE-6 6" rounded
BONE-8P 8" pointed one end

DIGITAL MEDIA ROLL HOLDER

Keep your rolls neatly organized and protected. Has 4" locking casters. Rolls stay upright because the 2" x 17" spindles fit the cores like a glove. Small footprint is only 26" x 26". Shipping weight 47 lbs.



Code: **RH**

40114 DESKSIDE SHREDDER

Dahle's **40114** is built with an 8 3/4" feed opening to accommodate both letter and legal size paper with a sheet capacity of 8-10 sheets. This cross cut shredder has a particle size of 1/8" x 1 9/16" and a capacity of 8 gallons waster capacity. Accepts staples, paper clips and credit cards.

Code: **40114**



CLEANTEC® 41214

The **CleanTEC®** is the World's only shredder with a fine dust filtration system. This integrated system collects fine dust particles created around the cutting cylinders, and forces them into a specialized filter on the back of each machine. Equipped with the revolutionary Safe Technology Package, each shredder offers Verbal and Contact Emergency Shutdown. In the event of an emergency, simply say "Stop" or tap the top cover of the machine, and the shredder immediately stops. It has a 9 1/2" feed opening, sheet capacity of 9-11 sheets, particle size of 1/8" x 1 9/16" and waste volume of 11 gallons.

Code: **41214**



BINDERY WORKSTATION TABLE

The **Bindery Workstation Table** is designed to complement the production of our General Graphic paper drills and punches. The Workstation includes 5 sliding drawers and two side tables that can be folded down when not in use. Overall dimensions with side tables out is 52" wide by 24" deep. The side tables are 16" x 24". Overall height is 26 1/2". This lower height gives added leverage and aids in the operation of the FP Series Drills and Punches. It comes fully assembled. Weight is 80 lbs.

Code: **WS**



SHRINK AND SEAL SYSTEMS



The Model PP48ST is an "All-in-One" Compact L' Sealer and Hooded Shrink Chamber in one complete unit. Seal area of 12" W x 18.5" L x 6" H. Machine comes with "Band Seal Technology," magnetic hold down for seal and shrink cycle, pin-wheel hole punch, and cast-

ers. Speeds of 2-6 PPM. Power requirement is 110 volt, 20 amps. Shipping weight is 275 lbs. Dimensions are 49" L x 26" W x 45" H.

The Model PP76ST has increased seal dimensions of 16" x 22" x 8". The PP76ST comes with a magnetic hold down and heavy duty plexiglass hood. Speed of 2-6 packages per minute. Power requirement is 220 volt, 25 amps. Shipping weight is 350 lbs. Dimensions are 56" L x 30" W x 45" H.

Code: **PP48ST** 12.5" x 18.5" Shrink System
PP76ST 16" x 22" Shrink System



The 1519 Economy series has a seal area of 15" W x 19" L. This L' Sealer and Tunnel combination system is only 76" in total length. The tunnel features fully re-circulating air chamber, digital temperature control, pin wheel hole

punch, 8 ft power cord and casters. Machines available in either 110 volt or 220 volt power as an option. Speeds of 10-12 PPM.

Code: **PP1519EC** Economy System
PP1519ECM With Magnet Hold Down
PP1519ECMC With Magnet Hold Down and Power Discharge

PP-1622MK Combo includes a 16"x 22" L' Sealer and



PP1808-28 Shrink Tunnel built on common frame. L' Sealer adjusts from side to side to center package into shrink tunnel while tunnel adjusts up

and down to match height of discharge conveyor on L' Sealer. One power source 220V, 1 phase, 45 amps. Includes pin wheel hole punch, locking casters and 8 ft power cord. Speeds of 10-20 PPM. Can be ordered with various optional conveyors.

Code: **PP1622MK-C** 16" x 22" Combo Shrink System
PP-180-24 180 degree curved conveyor w/24" take off

BAR SEALERS

The Model PP450H and PP600H are table-top shrink bar sealers which come complete with heat gun. Machines run on 110 volts.



	PP450H	PP600H
Shrink Width:	18"	24"
Shipping Weight:	26 lbs	33 lbs

Code: **PP450H** 18" Sealer w/Heat Gun
PP600H 24" Sealer w/Heat Gun
HG Heat Gun

SHRINK WRAP FILM

Film can be used on all types of applications. For both manual and semi-automatic shrink wrap machines. Two types of film are available:

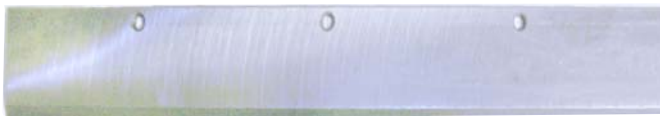
DYNACLEAR-PVC Shrinks at lower temperature, film great for all general purposes applications. Comes in 2,000 foot rolls.

QUICK SHRINK is a Polyolefin film that is a low cost all around general purpose shrink film. Comes in 3,500 foot rolls. Other sizes and gauges available.

Code:	Gauge:	Width x Length:
SW12-75	75	12" x 2,000'
SW16-75	75	16" x 2,000'
SW18-75	75	18" x 2,000'
SW12-75P	75	12" x 3,500'
SW16-75P	75	16" x 3,500'
SW18-75P	75	18" x 3,500'

Paper Cutter Accessories

PAPER CUTTER KNIVES



High quality inlaid steel. High speed steel available on some sizes.

Code: Model: Size:

CHALLENGE

CB-S150*	Spartan Model S150	18.250" x 1.630" x .25" 6H
CB-S185	Spartan Model S185	22.5" x 2.630" x .375" 6H
CB-20	Model 20/Titan 200	23.75" x 3.0" x .375" 4H
CB-26	Titan 265/265H	30.75" x 4.0" x .375" 12H
CB-30	305 MC/MCP/MPX	34.75" x 4.0" x .375" 12H



MBM/TRIUMPH/IDEAL

CB-T15*	3905/3915	17.488" x 1.535" x .236" 5H
CB-T16*	4215/4315	19.173" x 1.535" x .236" 5H
CB-T18	4850	22.444" x 3.543" x .393" 5H
CB-T25	6550	29.763" x 3.543" x .393" 5H

POLAR

CB-P72	71, 72C, 75	34.173" x 4.094" x .381"
CB-P76	76EL	36.417" x 4.330" x .381"
CB-P92	92 EL, 92CE	43.110" x 4.724" x .461"

*Stocked in HSS only.

Other cutter sizes available - prices on request.

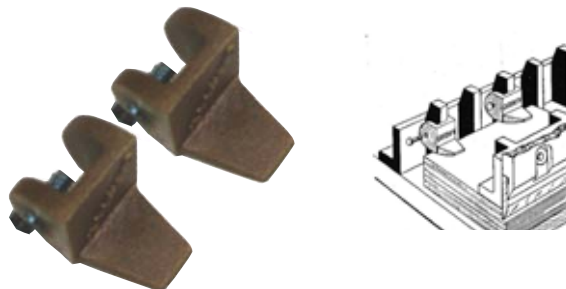
MAGNETIC CUTTER PADS



Helps eliminate marking when cutting carbonless and other sensitive papers. Soft magnetic vinyl pads stick to clamp. 3" x 15" Pads.

Code: **MCP** 2/pkg

GENERAL GRAPHIC BOOK CLAMPS



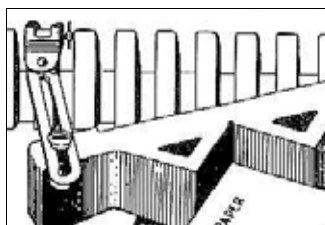
Cut books quickly, safely and professionally with **General Graphic Book Clamps**. Made of solid cast brass, the clamps safely hold down the folded or stitched side of booklets, pamphlets or catalogs while being trimmed in the paper cutter. This eliminates the common (and dangerous) practice of holding them down manually.

Code: **BOOK** 2/pkg

PAPER STOCK ANGLE GUIDE



Cut corners off statements, tags, etc. at up to a 45° angle. Use attachment (furnished) to cut diamond shaped angles, triangles or any other angle.



Instant setup; place angle guide against stock cutter gauge and set cutter to necessary measure.

Code: **PSA**

34

JOGGING AID



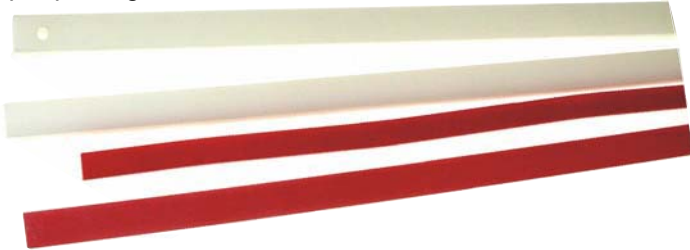
Wood **Jogging Aid** keeps hands from blade while jogging paper against back gauge. Made of white maple. No metal screws to damage blade if accidentally cut through.

Code: **JA-8** 8" long x 3" high
JA-12 12" long x 3" high

Paper Cutters and Sticks

PAPER CUTTER STICKS

Soft plastic cutter stick ideal for maintaining blade life. Some MBM/Ideal sticks have holes, or a knurled end depending on model. Challenge and MBM/Ideal are white plastic. Polar are a harder red plastic. One dozen sticks per package.



Code:	Size:	
CHALLENGE		
CS-C16	16" x 1/2" square	Spartan 150
CS-C20	20" x 1/2" square	Titan 200/Mdl 20
CS-C26	26 1/2" x 1/2" square	Titan 265
CS-C30	30 1/2" x 1/2" square	305MC series

MBM /TRIUMPH/IDEAL

CS-T15	15 5/16" x 9/16" square	Ideal 3905, 3915
CS-T16	22.5" x 9/16" square w/ knurled end	Ideal 4215, 4315
CS-T18E	22 7/8" x 9/16" square	Ideal 4810, 4850
CS-T20	25 3/8" x 9/16" square	Ideal 5550, 0684
CS-T25	30 1/8" x 9/16" square	Ideal 6550

POLAR

CS-P72	3/16" x 3/8" x 28 3/4"
CS-P76	3/16" x 3/8" x 30 1/4"
CS-P82	3/16" x 3/8" x 32 5/8"
CS-P90	3/16" x 3/8" x 35 3/4"
CS-P92	3/16" x 3/8" x 36 1/2"
CS-P115	3/16" x 3/8" x 45 5/8"

Other sizes available - prices on request.

LARGE FORMAT GUILLOTINE CUTTER

Commercial grade cutters designed to cut large amounts of paper with your safety in mind. The manual foot clamp holds material securely across the entire cutting surface. A spindle driven backstop on the "cut off" table and optional laser guide ensures that each cut is as accurate as possible. This guillotine sits on top of a permanently mounted stand to ensure proper height and leverage for trimming.



Code:	Size:	Capacity:	W/Laser:
D580	32"	30 Sheets	D580L
D585	43 1/4"	30 Sheets	D585L

STACK CUTTER



The **GUILLO-MAX** is a heavy duty manual Stack Paper Cutter capable of smoothly cutting up to 360 sheets/1 1/2" of 20 lb bond at one time. Maximum cutting width is 17". Alignment measuring grid on surface of the trimmer. Cutting capacity: 360 sheets or 1-1/2" thick copy paper.



Cutting length: 17" inches
Machine size: 28" x 20" x 14"
Machine weight: 77 lbs.
Table dimension: 16.5" x 17"

Code:	GUILLO	Guillo Stack Cutter
	GUILLO-ST	Guillo Stack Cutter Stand

HEAVY DUTY PAPER STACK CUTTER



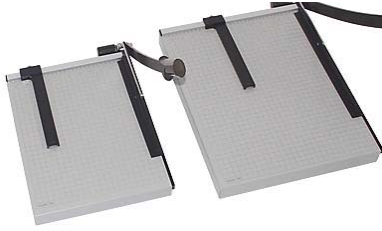
This heavy duty stack cutter has a maximum cutting capacity of 800 sheets of 20lb paper. Cutting width up to 18". Features hand clamp and back gauge and measuring scale in inches and millimeters. Safety features include protective shield on both sides of blade and cutting guard activated safety lock.

Code: **GUILLO-HD**

Trimmers, Creasers and Perforators

PAPER TRIMMERS

Vantage 12E and 18E Trimmers have automatic paper clamping, preprinted grid and spring action metal blade. Value priced.



Code: **D12E** 12" Trimmer
D18E 18" Trimmer

PROFESSIONAL GUILLOTINE TRIMMER

Two models with cut lengths of 13 3/8" or 18". Sheet capacity up to 15 sheets. Includes a protective safety guard, has a self-sharpening blade and an automatic clamp that holds work securely. Sturdy metal base with preprinted guides.



Code: **D533** 13 3/8" Trimmer
D534 18" Trimmer

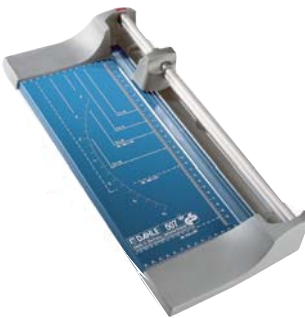
D370 CARD MAKER

An economical rotary trimmer that will cut, perforate, score and deckle-cut up to 3 sheets of paper. Ideal for small jobs. Comes with 4 interchangeable heads.



Code: **D370**

MODEL 507 PERFING/CUTTING



The **507 Personal Trimmer** will trim up to 7 sheets of paper at one time. Cut length is 12 1/2". Automatic paper clamp and self sharpening blade. Available with optional 3 interchangeable blades: Perf, Wavy, and Deckle.



Code: **D507**

E460 ELECTRIC CREASER



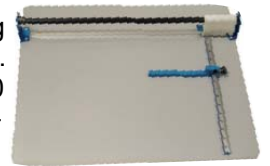
The **E460 Electric Creaser** is an excellent choice for light duty creasing and perforating where speed and versatility are required. The E460 can handle paper up to 18.4"

wide. Comes with two dies, creasing and micro-perforating. Creasing die can accommodate paper between 250-350 grams. Crease size is .5 mm x 1.5 mm. Micro perforating is 12:1 with paper thickness of 250 grams or less. Other dies available. Foot pedal controlled. Size is 24" x 21" x 10". Weight is 65 lbs.

Code:
S-E460 Electric Creasing and Perforating Machine

PERF AND SCORE II

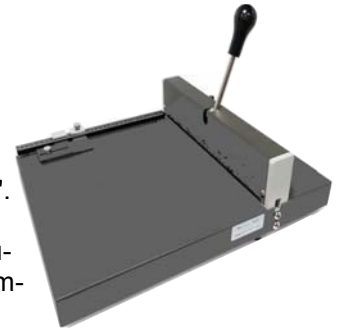
Tabletop perforating and scoring machine. Handles stock from 20 lb. to cover stock. Perf wheel has 10 perfs per inch. Includes one perforation wheel and one score wheel. Available in two sizes.



Code: **PSM** 19 1/2" sheet capacity
PSM-25 25" sheet capacity

CR-135 CREASER

The **CR135 Manual Creaser** can score paper widths up to 13 5/8" and as deep as 12 1/2". The CR135 Manual Creaser is designed to score/crease documents or prints that can be damaged easily due to cracking of printed ink.



Max Paper Weight: up to 17 pt. cover
Max Score Length: 12.5"
Min Score Length: 1 3/4"

Code: **CR-135**

Round Corner Machines

MODEL 20 CORNER ROUNDER



The **Model 20** is designed to handle paper and plastic products. It has a capacity of up to a 1/2" of stock per cut with its shear cutting action. Compact 5" x 10-1/2" size makes it easy to use. Comes with choice of standard die.



Code: **CR-20** Machine w/Standard Cutting Unit

Standard Dies		Special Dies	
Code:	Size:	Code:	Size:
CU18	1/8" Die	CU516	5/16" Die
CU14	1/4" Die	CU58	5/8" Die
CU38	3/8" Die	CU34	3/4" Die
CU12	1/2" Die	CU1	1" Die

Other size dies available.

MODEL 55

A floor model cutter designed with a 2" cutting capacity for both paper and plastic. Conveniently located foot pedal for fast and economical corner cutting. Table size is 20" x 20" Shipping weight is 138 lbs.



Code:

CR-55 Standard Floor Model

CR-55-1 Blades (1/8", 1/4", 3/8", 1/2")

CR-55-2 Dies (1/4"/3/8" or 1/8"/1/2")

ELECTRIC CORNER ROUNDING MACHINE

Heavy duty electric corner rounding machine. Rounds up to 700 sheets cutting up to 2.75" (70mm). Machine comes with 1/4" die but 6 interchangeable dies are available as options. Features protective safety cover, detachable pressing bar and foot pedal. Weight 110 lbs.

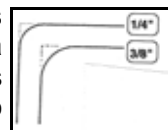


Code: **D-7**

NICE-N-EZ CORNERING MACHINE



The **Nice-n-EZ** is a precise and smooth cornering machine for cutting up to 1" of stock. Ideal for rounding corners on literature, business cards, photographs, negatives and plastic. Handle has a 5" wide grip and is extended in length to provide greater leverage.



Code: **EZ** Cornering Machine

EZ-14 1/4" Blade

EZ-18 1/8" Blade

EZ-12 1/2" Blade

EZ-38 3/8" Blade

EZD-1 Die 1/4"-3/8"

EZD-2 Die 1/8"-1/2"

DIAMOND ROUND CORNERING MACHINE

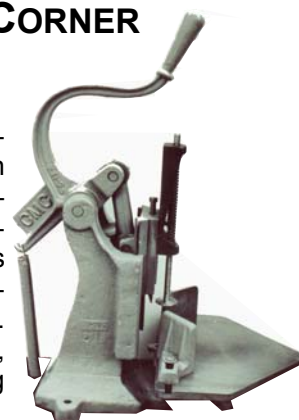
Use to round corner cover stock, laminates, business cards, PVC, polyester, and various papers. Maximum cutting capacity is 3/8". Includes 1/4" radius knife. Specially designed to cut through multiple sheets at a time with the least effort and with minimum die depreciation. Other size dies available.



Code: **DRC-1** Diamond Round Corner Machine

CRAFTSMEN ROUND CORNER MACHINE

Heavy duty table top round cornering machine. Cuts through lifts of paper up to 2 1/2" in thickness. Self-adjusting spring operated clamp precedes the knives and holds lift firmly in place. Includes a 3/8" radius knife/die set. Extra knives available in 1/4", 1/2", and 3/4" radius. Shipping weight is 65 lbs.



Code: **CRC** Craftsmen Round Corner Machine

RC-14 1/4" Round Corner Knife and Die

RC-38 3/8" Round Corner Knife and Die

RC-12 1/2" Round Corner Knife and Die

RC-34 3/4" Round Corner Knife and Die

Laminators and Supplies

ULTRA PHOTO 13



The ultimate in pouch laminating. The **Ultra Photo 13** is a 6 roller laminator with 4 of the rollers heated. The laminator comes equipped with an electronic thermostat for digital temperature control. It has speed control and reverse action. The Ultra Photo 13 will laminate materials up to 13 1/4" wide at speeds up to 59" per minute. It can accommodate pouches up to 10 mil in thickness. Includes ready light and auto shut off when not in use. All metal construction. Shipping weight 39 lbs.

Code: **PL-UP13** Ultra Photo 13 Laminator

LAMINATOR CLEANING BAR

A light abrasive bar that will not damage rollers. Ideal for removing built up adhesives on laminator rollers. Size is 1 1/2" x 4".



Code: **LCB**

LAMINATOR ROLLER CLEANER

A mild cleaner that easily lifts dirt and dried adhesives from laminator rollers. Also works well with most folder rollers to remove built up toner.

Code: **LAM-P** Pint



LAMINATOR CLEANER KIT

The Standard Laminator Cleaner Kit contains two 4" laminating cleaner bars and a tack cloth. Deluxe includes laminator roller cleaner.



Code:
LAM-KIT Standard Cleaning Kit
LAM-DKIT Deluxe Cleaning Kit

XYRON® EZ LAMINATOR™

A cold laminator that operates simply by hand. The lamination is photo safe and ideal for a variety of documents up to 8.5" wide. It's perfect for items that need protection, including certificates, manuals and diagrams. The **EZ Laminator™** comes preloaded with a 25' long starter cartridge of two-sided laminating material.



Code: **EZ-LAM**
EZ-LAM-C Replacement Cartridge Laminar
EZ-LAM-M Replacement Cartridge Magnetic

LAMINATOR ROLL CUTTER

Slip the foot of the tool under the material to be cut and push for a straight, clean cut.



Code: **ZCUT**

LAMINATING POUCHES

LAM-6-3	Letter Size 9" X 11 1/2"	3 mil
LAM-6-5	Letter Size 9" X 11 1/2"	5 mil
LAM-6-10	Letter Size 9" X 11 1/2"	10 mil 50/pkg
LAM-7-3	Legal Size 9" X 14 1/2"	3 mil
LAM-7-5	Legal Size 9" X 14 1/2"	5 mil
LAM-8-3	Menu Size 11 1/2" X 17 1/2"	3 mil
LAM-8-5	Menu Size 11 1/2" X 17 1/2"	5 mil
LAM-8-10	Menu Size 11 1/2" X 17 1/2"	10 mil 50/pkg

ROLL LAMINATING MATERIAL

CODE 2 1/4" CORE:	CODE 1" CORE:	Size:
12-035	12-035-1	12" X 500' X 1.4 mil
12-075	12-075-1	12" X 250' X 3.0 mil
12-125	12-125-1	12" X 200' X 5.0 mil
18-035	18-035-1	18" x 500' x 1.4 mil
18-075	18-075-1	18" x 250' x 3.0 mil
18-125	18-125-1	18" x 200' x 5.0 mil
25-035	25-035-1	25" x 500' x 1.4 mil
25-075	25-075-1	25" x 250' x 3.0 mil
25-125	25-125-1	25" x 200' x 5.0 mil

Roll Laminators and Low Melt Film

27" ROLL LAMINATORS

The **RSL-2701S** has digital heat and speed controls. Can laminate up to 5 mil thick at 7.9 feet per minute. Perfect for laminating and mounting posters and other graphics up to 1/16" as well as encapsulating graphics.

The **RSL-2702** is an all in one digital finisher doing both thermal and cold pressure sensitive laminating at speeds of up to 8.4 feet per minute. Laminates materials up to 10 mil. Includes rear cross cut and independent upper and lower roller temperature controls. The 9 memory channels saves the most often used settings into memory for quick access.

The **Excelam Plus 685** is capable of hot and cold laminating at speeds up to 10 feet per minute. Laminates materials up to 10 mil. Has heated rollers, variables speed and temperature controls. Mounting capacity of 3/16".

Code:
RSL-2701S 27" Laminator
RSL-2702 27" Hot/Cold Laminator
EX685P 27" Hot/Cold Laminator



FM360S HOT/COLD ROLL LAMINATOR

The **FM360S** is the ideal laminator for doing single sided documents up to 13" wide either hot or cold. It also has the versatility to do two sided documents. Includes adjustable side cutter and anti-curling bar.



Specifications:

Maximum Laminator Width: 13" (340 mm)
 Maximum Film Thickness: 5 mil
 Laminator Speed: 24-64 inches/minute
 600-1600 mm/min
 Temperature range: 20-160 C
 Dimension: 24.8" x 17.6" x 11.4"
 Weight: 66 lbs.

Code: **FM360S** 13" Hot/Cold Laminator

RSH-380SL 15" ROLL LAMINATOR

Designed with high quality dual heated silicone rollers, digital controls, and multiple speed settings. Double and single laminating with fast laminating speed of up to 14.8' per minute. Large laminating film capacity can hold up to 7.9" (200 mm) roll diameter. De-Curling function provides high quality flat output during single-sided laminating. Laminates materials up to 10 mil thickness and 14.8 feet per minute.



Code: **RSH-380** 15" Roll Laminator

WIDE FORMAT LAMINATORS

The **Excelam Plus 1080** is a 42" hot roller laminator that has dual temperature and speed controls. It features a roller gap control that accommodates mounting up to 3/16" in thickness. Laminates up to 10 mil thickness.



Code: **EX1080P**

The **Excelam 1100 Swing** is a 45" roll laminator that incorporates top and bottom heated rollers with independent heat controls allowing for single sided laminating, encapsulating and cold laminating. It features a roller gap control that accommodates mounting up to 1/2" in thickness, keypad controls that allows the operator to adjust speed and temperature. Laminates up to 10 mil thickness.



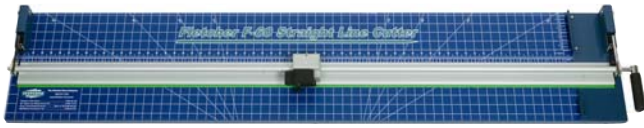
Code: **EX1100**

LOW MELT LAMINATING MATERIAL

Code	Description	Code	Description
38-175-3LM-G	38" x 250' 3 mil gloss 3" core	38-175-5LM-G	38" x 200' 5 mil gloss 3" core
38-175-3LM-M	38" x 250' 3 mil matte 3" core	38-175-5LM-M	38" x 200' 5 mil matte 3" core
43-175-3LM-G	43" x 250' 3 mil gloss 3" core	43-175-5LM-G	43" x 200' 5 mil gloss 3" core
43-175-3LM-M	43" x 250' 3 mil matte 3" core	43-175-5LM-M	43" x 200' 5 mil matte 3" core

Trimmers and Cutters

F-60 SUBSTRATE CUTTER



This unique trimmer can be used on a table top or as a space saving wall mount unit (below right). **F-60 Substrate Cutter** is ideal for laminated art, photo paper and vinyl digital prints. Use it to trim your banner materials, corrugated plastic up to 6 mm, PVC up to 3 mm, and Gator Board up to 13 mm. Cutting head unit is equipped with "Lock & Cut" feature. The cutting head lowers and locks in place during cutting process. The lock down pressure clamp improves cutting control and edge quality of rigid substrates by securely holding material in place while cutting. Equipped with built-in squaring arm to securely hold the material for 90° cutting.



Code: **F-60** 60" Trimmer
F-60M Wall Mount

F3100 SUBSTRATE CUTTER



The **F3100 Substrate Cutter** is capable of cutting the following materials:

- Gator Board up to 1/2" (13 mm)
- Foam board up to 1/2" (13 mm)
- Corrugated Plastics up to 1/2" (13 mm)
- PVC, Acrylic and Glass up to 1/4" (6 mm)
- Aluminum Sheets up to .040"

It has a vertical cutting capacity of 63" (1.6 m). The patented lever type clamping system secures in place various substrate materials up to 60" in height to prevent buckling and shifting of material during the cutting process. Available with optional stand.

Code: **FT-3100** 3100 Substrate Cutter
FT-3100S 3100 Stand

TITAN SUBSTRATE CUTTER



The **Titan Substrate Cutter** is capability of cutting many flexible and semi-rigid materials including photo papers, vinyl, canvas, laminates, foam board, corrugated plastics, PVC and banner materials. An engineered "green" strip gives you a visible cut line. Available in 60", 100" and 120" sizes. Available with optional stand and extended cutting arm.

Code: TRIM-60	Titan 60" Trimmer
TRIM-100	Titan 100" Trimmer
TRIM-120	Titan 120" Trimmer
TRIM-60S	Titan 60" Stand
TRIM-100S	Titan 100" Stand
TRIM-120S	Titan 120" Stand
TRIM-SA	24" Squaring Arm

ECONOMY FOAM BOARD TRIMMER



Available in 40" width and designed for trimming both paper and foam. Designed with flexibility and efficiency in mind. The trimmer has the capability of cutting media up to 10 mm in thickness. This includes, but is not limited to, cardstock, PVC foam board, corrugated plastics, vinyl and plastic films and cardboard.

Available with optional stand.

Code: FBT-40	40" Foam Board Trimmer
FBT-40S	Stand for 40" Foam Board Trim-

Rotary Trimmers

PROFESSIONAL TRIMMERS

The **Professional Trimmers** are low cost rotary trimmers available in sizes from 14" to 51". They feature a self sharpening blade, see-through paper clamp, and adjustable back stop. Larger sizes have the option of a paper roll holder and stand.

Model:	Cut:	Capacity:
D550	14 1/8"	12 sheets
D552	20 1/8"	12 sheets
D554	28 1/4"	12 sheets
D556	37 1/2"	8 sheets
D558	51"	6 sheets
D698	D558 w/stand	



PREMIUM TRIMMERS



The **Premium Trimmers** are high capacity rotary trimmers available from 14" to 72". They feature a self sharpening blade, see-through paper clamp, and adjustable backstops. The thick walled aluminum guide bar helps assure accurate cutting. Larger sizes have the option of a paper roll holder and stand. Trimmer can handle such diverse materials as cardboard, mat board, laminating film and plastic films.

Model:	Cut:	Capacity:
D440	14 1/8"	30 sheets
D442	20 1/8"	30 sheets
D444	26 3/8"	25 sheets
D446	36 1/4"	22 sheets
D448	51 1/8"	20 sheets
D472	72" w/stand	12 sheets
D796	D446 w/stand	
D798	D448 w/stand	

WIDE FORMAT ELECTRIC TRIMMER



Use the **RET** electric trimmers to easily and professionally finish wide format graphics up to .8 mm thick. Fully featured with fast trimming speeds of up to 6.6 ft/sec, full length activation bar, foot pedal activation, lighted power switch, waste catcher, and illuminated guide line all designed for quick and accurate trimming of signs, posters, and various laminated materials. Built-In safety covers, durable steel floor stand, and self-sharpening hardened steel blades provide reliable trimming with minimal maintenance. Available in two sizes, 59" and 98".

Code: **RET-59** 59" Electric Trimmer
RET-98 98" Electric Trimmer

ROTATRIM ROTARY CUTTERS



ROTATRIM Trimmers have self-sharpening tungsten steel cutting wheel and cast metal cutting head and end supports. Twin 1/2" diameter chromed steel guide bars give added support. Grey Melamine® baseboard, 7/8" thick x 12" wide has printed grid in inches and metric, with 1/4" grid lines. Transparent clamp strip holds material firmly. Aluminum side rule is calibrated in inch and metric with adjustable cursor for repeat cuts. Cuts in both directions (an overload plate on models M24T-M54T can be removed for bi-directional cutting of thin materials). Floor stand and other accessories available.

Code:
RC24 24" Rotary Cutter
RC30 30" Rotary Cutter
RC36 36" Rotary Cutter
RC42 42" Rotary Cutter
RC54 54" Rotary Cutter

Grommet Machines

GROMMET PRESS

The **GM-1 Grommet Press** has a heavy duty cast iron frame. Ideal for placing grommets in a variety of material. Available with a 5/16" die for using #1 grommets or 3/8" die for #2 grommets.

Specifications:

Height: 16 1/2"

Weight: 23 lbs

Bench Space: 3 1/2" x 9 1/4"

Code: **GM-1** w/#1 Head
GM-2 w/#2 Head



MODEL 405 GROMMET PRESS

The **405 Grommet Press** has a heavy duty cast iron frame. Ideal for placing grommets in a variety of material. Comes with choice of 5/16" or 3/8" die.

Specifications:

Height: 12"

Weight: 20 lbs

Bench Space: 3 1/2" x 9"

Code: **GM405**



MODEL 479 GROMMET PRESS

Model 479 Foot Powered Grommet Press offering increased productivity over the Model 405. Comes standard with a 5/16" die.

Specifications:

Height: 45"

Weight: 113 lbs

Throat Depth: 4"

Stroke: 1 3/8"

Floor Space: 14" x 20"

Code: **GM479**



MP10 ELECTRIC GROMMET PRESS



The **Model MP10** is an innovative mini-press designed for grommet applications. Pre-punched work is not required as the power of the MP10 coupled with self-piercing grommets consistently delivers good settings.

Code: **MP10**

MIC-02 Electric Grommet Press



The **MIC-02 Electric Press** is the ultimate electric grommet attaching machine for professional use. It accelerates the grommet application process and increases the efficiency of your factory or shop.

The **MIC-02** offers hands free operation. It is available with interchangeable dies and has adjustable pressure and built in safety system.

Code: **MIC-02**

GROMMETS

We recommend using specific grommets for specific machines. All our grommets are "No Hole Needed" Self-Piercing Grommets and are made from heavier gauge brass than traditional sheet metal grommets. When paired with their matching washers, they pierce and set in a single action without the need for a pre-punched hole. Just place the grommet in the top die, lay the washer on the bottom die, position your work and pierce and set in one action.



Code	Description	Model	Code	Description	Model
SRIV-1	#1 5/16 Brass	GM-1	SRIV-1STM	#1 5/16 Brass	GM-405-1
SRIV-1S	#1 5/16 Nickel	GM-1	SRIV-1SSTM	#1 5/16 Nickel	GM-405-1
SRIV-2	#2 3/8 Brass	GM-2	SRIV-1E-STM	#1 5/16 Extended Brass	GM-405-1
SRIV-2S	#2 3/8 Nickel	GM-2	SRIV-2STM	#2 3/8 Brass	GM-405-2
SRIV-2E	#2 3/8 Extended Brass	GM-2			

WIDE FORMAT TAPES

Banner Tape—PVC

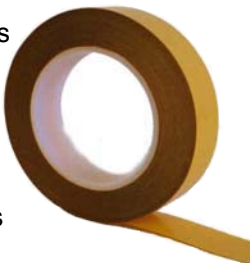
A double coated banner tape used in bonding many types of banner materials. Thickness of 225 microns with ivory PVC carrier makes for easier creation of banner hems. Coated on both sides with a very aggressive acrylic adhesive.



Code: **BTAPE** 1" x 33 meters

Banner Tape—Polyester

Designed for creating banner hems and pole pockets. Thin polyester film 125 microns thick with aggressive acrylic adhesive and paper lining. Also for use on plastic and foam.



Code: **BTAPE-POLY** 1" x 33 meters

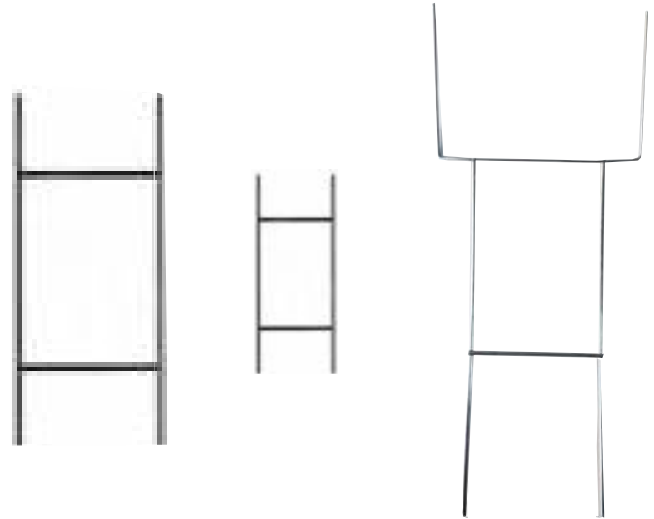
Foam Bond Tape

A highly aggressive foam tape used for bonding metal, plastic, painted materials, foam, and vinyl. Heat resistant up to 120° C. White foam .8 mil thick with red film lining.



Code: **AFT** 1" x 33 meters

H-FRAME STEP STAKES



Constructed of 9 gauge galvanized wire (0.148"). Designed to work with 4 mil corrugated plastic sign boards. Three sizes available:

Code:

ST-1030

Economy Step Stake 10" x 30". Recommended for corrugated signs up to 24" x 18". Packaged 50 per case.

ST-1015

Half Step Stake –10" wide 15" height. Allows for adding additional corrugated plastic signage above your main sign. Packaged 100 per case.

ST1030HD

Heavy Duty Step Stake 10" x 30" designed with U-shaped top for extra strength and stability. Packaged 25 per case.

Wide Format Supplies

SAFETY EDGE CUTTING BAR

Light weight aluminum cutting bar with easy to hold rigid lip. Protects hand while cutting materials as well as helps to insure straight and accurate cuts. Non skid rubber base prevents slips. Hangs for storage. Also available in steel in limited sizes. Stainless steel comes with graduated edge.



Code: **SE30** 30" Safety Edge Code: **SE48** 48" Safety Edge
SE36 36" Safety Edge **SE60** 60" Safety Edge
SE42 42" Safety Edge **SE72** 72" Safety Edge

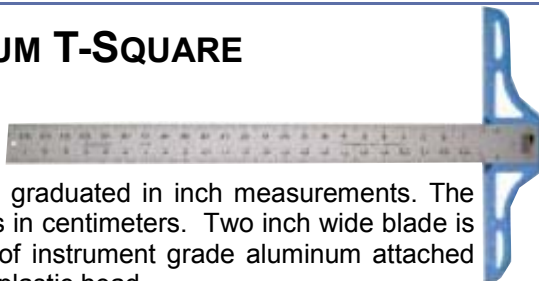
Stainless Steel Edge:

Code: **SES40** 40" Stainless Steel Safety Edge
SES64 64" Stainless Steel Safety Edge
SES76 76" Stainless Steel Safety Edge
SES100 100" Stainless Steel Safety Edge



ALUMINUM T-SQUARE

One edge is graduated in inch measurements. The other edge is in centimeters. Two inch wide blade is constructed of instrument grade aluminum attached to a durable plastic head.



Code: **TSQ-24** 24" Aluminum T-Square
TSQ-30 30" Aluminum T-Square
TSQ-36 36" Aluminum T-Square
TSQ-48 48" Aluminum T-Square

PLASTIC SCRAPER BLADE

Safely remove paint, glue, adhesive stickers and labels without damaging or scratching finish of metals, furniture, walls, windows, etc. Blades have two beveled edges that get underneath material for clean removal.

Code: **R9P**



ERGONOMIC PLASTIC SCRAPER

Lightweight plastic handle is great for hard-to-reach areas. Can use either standard .009" single edge blades or plastic razor blades.

Code: **R9-EPS**



Banner Material Cutter



Heavy-duty plastic body with comfortable non-slip grip. Protected blade for safe use. Includes tape punch and replaceable blade.

Refill with 3 hole double edge blades.



Code: **BMC** Banner Material Cutter
BMC-B Replacement Blades 10/Pkg

VELCRO TAPE



Available in rolls or 4" cut strips. Rolls are 1" x 50 yards. Each package contains four 1" x 4" strips of adhesive backed Velcro sets. Can be used indoors for attaching large format materials, signage, etc.

Code: **V-STRIPS** 1" x 4" Strips (4)
V-TAPE Velcro Tape 1" x 50 yards

ADHESIVE BACK COINS



Available in both white and black, hook and loop.

CODE	WIDTH	QTY PER ROLL	COLOR/TYPE
VHB-34	3/4"	1,200	Black Hook
VLB-34	3/4"	1,200	Black Loop
VHW-34	3/4"	1,200	White Hook
VHL-34	3/4"	1,200	White Loop

CORRUGATED PLASTIC SHEETS

White fluted material is 24" x 18", 4 mil thick sheets.

Code: **ST7436** 10 sheets/pkg



HANGING AND DISPLAY PRODUCTS

PosterConnection™

A professional, secure, and fast way to hang posters, signs, displays and foam board. This unique hanging system levels, then locks the mounted artwork securely to the wall. Eliminates crooked artwork. An excellent way to hang mounted artwork without a frame.



Code: **POSTERC** each

DisplayEasel™

This unique easel allows you to display photos, mirrors, tiles, plaques, etchings, and awards without the use of a full table easel. Self-adhesive support attaches to any flat backing in seconds. Adjusts to any angle and is extremely sturdy.



Code: **DISPLAYE** each

PosterHanger™

Hang without framing. Just peel off adhesive cover, place in center of poster 1/4" from top, insert tack into wall, then hang. Easy to use, economical, rigid, quick, adjustable and versatile.



Code: **POSTERH** each

Cable Ties

Fast, inexpensive way to secure signs and other items. Simply adjust to desired size and lock permanently in place with ratcheting mechanism.



Code: **13502** 8" Cable Ties 100/pkg

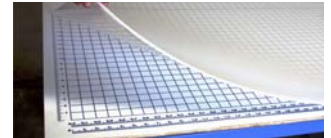
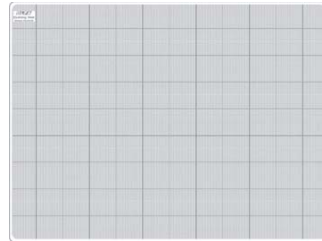
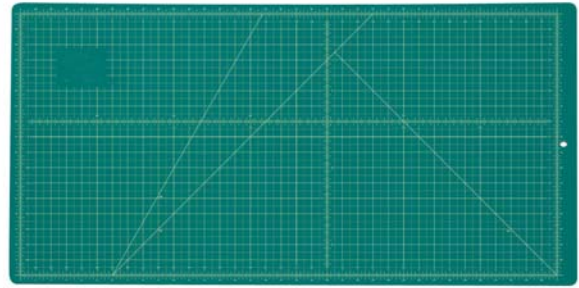
TIGHT'N'UP CANVAS RE-TENSIONER

Tight'n'Up liquid canvas re-tensioner is the perfect solution to most canvas-tension problems. Tight'n'Up instantly and safely tightens well-stretched canvases and paintings. Comes in 16 oz. spray bottle.

Code: **TNUP** 16 oz.



CUTTING MATS SELF-HEALING



Self-healing properties allow for maximum durability. The 1/8" (3 mm) thickness protects work surfaces from being damaged. Pre-printed 1/2" grid for easy sizing of paper. Sizes 24" x 36" and smaller are translucent with grid printed on mat. Larger sizes come with separate printed grid used underneath the mat. Custom sizes available.

Code:

CB1218	12" x 18" Cutting Mat Translucent
CB1824	18" x 24" Cutting Mat Translucent
CB2436	24" x 36" Cutting Mat Translucent
CB2448	24" x 48" Cutting Mat w/Printed Grid
CB4860	48" x 60" Cutting Mat w/Printed Grid
CB4896	48" x 96" Cutting Mat w/Printed Grid
CB48144	48" x 144" Cutting Mat w/Printed Grid
CB4896G	48" x 96" Cutting Mat Green with Grid
CB3313	33" x 13" Cutting Mat w/Printed Grid
CB5112	51" x 13" Cutting Mat w/Printed Grid
CB6713	65" x 13" Cutting Mat w/Printed Grid
CB4730	47" x 30" Cutting Mat w/Printed Grid

COTTON GLOVES

Ideal for handling wide format ink jet prints and other sensitive materials. Protects hands and materials.



Code:

GLOVE-CS	small 12 pair/package
GLOVE-CL	large 12 pair/package
GLOVE-CL3	large 3 pair/package

Joggers, Numbering and Banding

LJ-2 BIN JOGGER

Perfect for quick printers and mail rooms. Jogs a full ream of standard copy paper or one-half ream of 11" x 17". Ideal for checks and envelopes. Table size is 4"W x 7"D x 13"H. Shipping weight is 32 lb.

Code: **LJ-2**



LJ-4 TRAY JOGGER

Large table allows for perfect alignment of all forms of paper products. Table size is 17" x 17". Tilt is nonadjustable. Capacity is one ream of 11" x 17". Shipping weight is 36 lb.

Code: **LJ-4**

COMBINATION JOGGERS

The sturdy **Combination Series Joggers** can handle up to 4" lifts. The versatile table tilts from flat to 45 degrees and can be fitted with accessory dividers for multiple lifts of smaller stock. Jogging action is adjustable with the unique "Dial-a-Jog" control. The dual on/off control is actuated either with the toggle switch on the machine base, or by a foot switch for hands-free operation. Stand is optional.



Code: 2026A	20" x 26"
2436A	24" x 36"
2840A	28" x 40"

HANDY-JOG JOGGERS

The **Handy-Jog** is a low cost, highly effective jogger that fits into the most cost-conscious budget. With its small footprint, the Handy-Jog can be placed beside any machine. Unlike other low cost joggers that have motors, bearings, and rubber couplings, the Handy-Jog has no moving parts that will wear or require maintenance. The **Handy-Jog** is also available in two other styles to fit the particular job, with check tray and large format.

Code:

HJ	Handy-Jog (8 1/2" x 11")
HJ-C	Handy-Jog w/check tray
HJ-L	Handy-Jog w/large tray (11" x 17")



NUMBERING MACHINE

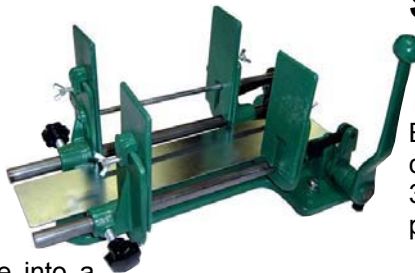
Tabletop six wheel numbering machine can number up to eight part carbonless forms. Number consecutive, duplicate, triplicate, four times, six times, twelve times or repeat action. Includes one gothic head with bottle of ink and five ink pads.



Code: NR	Numbering Machine
BI	Black Ink
RI	Red Ink
PAD	Replacement Pads (dozen)

PRO BANDER BANDING PRESS

Fast, efficient, professional way to bundle folded jobs. The **Pro Bander's** solid cast iron construction is built tough to last for years. To band, just place pre-cut tie strips or General Graphic Cohesive Bands on bottom plate. Load the Pro Bander with folded sheets. Compress folded sheets. The positive lever-action clamp locks automatically as it compresses. Wrap or tie into a neat, easy to count, easy to handle bundle. Handles folded stacks up to 12". Shipping weight 47 lb.



Code: **BAND-A**

COHESIVE BANDING STRIPS

Strong, self-sealing paper bands work right along with General Graphic's Banding Press. Available in two convenient sizes, 22" x 1 7/8" wide and 30" x 1 7/8" wide. Five-hundred strips per package.

Code: BAND-22	22" long strips
BAND-30	30" long strips

QUALITY PRODUCTS

Continued from Back Cover

Laser Plate Cleaner	10	Pens, Deletion, Addition	8	Stouffer Guides	6
Lassco-Spinnet Drill Bits	23,24	Perf-Score Machine	36	Suckers, Sheet Separators	15
Latex Gloves	17	Perfect Binder	18	Shrink Wrap Machines/Film	43
Lil-Bit	24	pH Testers	9	Substrate Cutter	40
Line Gauge	4	Pile Separators	13		
Linen Tester	7	Plastic Fixative	11	Tabs, Register	5
Line Up Board	8	Plastic Ink Knives	15	Tape, Artist	6
Litho Tape	5	Plastic Squeeze Bottles	14	Tape, Banner	43
Litho-O-paquer	8	Plate Cleaner	10	Tape, Litho	5
Long Reach Stapler	27	Plate Punches	13	Tight "N" Up	45
Loupe	7	Plockmatic Staple Cartridge	27	Titian Foam Board Trimmer	40
L-Sealers	33	Pouch Laminators	38	Thickness Gauge	12
Lubricant, Spray	10,11	Pouches, Laminating	38	Three Hole Punches	29
Lubricants		Printers Folding Loupe	7	Three Spindle Drills	22
		Proportional Scales	4	Trimmers, Paper, Laminate	40,41
		Punches, Plate Pinbar	13	Trucks, Stock, Duplicator	21
		Punchmaster	13	T-Squares	44
				Two Hole Punches	30
Magic Glue	20	Quick as a Wink	20		
Magnetic Cutter Pads	34	Quick Shrink	33	Ultra Pad	19
Magnifier	7			Utility Knife	2
Masking Sheets	5	Rapid Staplers, Staplers	26-28	Vacuum Pump Oil	10
Mat, Anti-fatigue/Anti Static	17	Razor Blades	2	Velcro Strips/Tape	44
Media Roll Holder	32	RBX Binding Machine	30	Vinyl gloves	17
Micrometer	12	Really Works Hand Cleaner	16		
Microscope Viewer	7	Register Tabs	5	Wedges	13
Mini Pad	19	Roll Knife	48	Wide Format Supplies	43-45
Mixing Knife	17	Rotary Trimmer	41	Wide Format Trimmers	39-41
Multi Binding Punch	31	Round Corner Machines	37	Wire	28
Multiple Spindle Drill	22	Rubber Brayer	6	Wire Binders	30
		Rubber Roller Cleaner	10,11	Wire Closer	32
Nitrile, Neoprene Gloves	17	Rulers	4	Workstation, Bindery	
No Roll Ear Plugs	16			X-Acto Knives/Blades	3
Non-Repro Pencils	8	Scales	9		
Numbering Machine	46	Scissors	6		
		Scrubs in a Bucket	16		
Offset Plate Punch	13	Separators, Pile	13		
Oil, Hydraulic, Vacuum Pump	10	Shears	6		
Olfa Blades, Knives	6	Shop Ticket Holders	13		
Opaque Brushes	6	Shredders	32		
Opaque Pens	8	Shrink Wrap Machine	33		
Optic Cable	26	Sign Display Hangers	45		
Overnight Spray	10	Silicone Spray	10,11		
		Single Spindle Drill	22		
Packaging Supplies	16	Spatula, Ink	15		
Packing Tape	16	Sponges	6		
Pad Adhesive	20	Spray Adhesive	11		
Pad Counter, Knife, Brush	20	Sprayway Products	11		
Pad Presses	18,19	Squeeze Bottles	14		
Padding Supplies	20	Stack Cutter	35		
Paddy Wagon	18	Staple Tackers	28		
Platemaker's Guide	6	Staplers, Staples, Stand	27		
Pantone Products	9	Staples, Special Purpose	26-28		
Paper Cutter Blades, Sticks	35	Starter Kit, Padding	20		
Paper Drills and Bits	22-24	Step Stakes	43		
Paper Punches, Heavy Duty	29	Static Tinsel, Products	17		
Paper Stock Angle Guide	34	Sticks, Paper Cutter	35		
Paper Stock Carts	21	Stock Trucks	21		
Paper Thickness Gauge	12				
Paper Trimmers	35,36				

FIND THESE QUALITY PRODUCTS INSIDE

Acrylic Brayer	6	Counting Scale	9	Gang Plank/Runner	36
Addition Pens	8	Creasing Machine	36	Glass Cleaner, Glisten	10
Adhesive, Padding	20	Crimpers	32	Gloves	17,45
Aerosols	10,11	Cube Loupe	7	Glue Sticks	6
Air Duster, Dust Off	10	Cutter Sticks and Blades	34,35	Graphic Arts Pens	7
Anti Static Mats	17	Cutter, Magnetic Pad	34	Graphic Arts Ruler	4
Anti Static Spray	17	Cutting Edge	44	Grommets	43
Anti Fatigue/Static Mats	17	Cutting Mats	45	Grommet Machines	42
Anti Static Tinsel	17	Cutting Tools/Blades	2,3	Guillotine Trimmers	35
Art Knife	2	Cylinder Cleaner	10		
Artist Tape	6			Hand Cleaner	16
		Dahle	32,41	Hand Stapler	27,28
Banding Press	46	Deletion Pens	8		
Banner Tape	43	Densitometers	13	H-Frame Stakes	43
Banner Material Cutter	44	Digital Microscope	7	Hanging Hardware, Wide Format	45
Bar Sealer	33	Digital Thickness Gauge	12	Heat Gun	33
Baum Drill Bits	24	Display Hardware	45	Hole Punches	29,30
Binder, Plastic Comb	30	Disposable Air	10	Hot Glue Binder	18
Binder, Wire	30	Docutec Staple Cartridge	27	Hydraulic Oil	10
Blade, Plastic	44	Dot Inspector	12		
Blades, Olfa, X-Acto, Razor	2,3	Drill Bits	23,24	IHARA Densitometers	13
Blanket Fix	11	Drill Blocks	25	Illustrator Pens	8
Blanket Scrubber	14	Drill Drift	25	Ink Knives, Scrapers, Spatula	15
Blankets, Press	14	Drill Ease	25	Ink Mixing Scales	9
Bone Folder	32	Drill Sharpener	24	Ink-Sav-R	10
Book Clamps	34	Drill, 3 Spindle	22	Inspection Loupes	7
Booklet Maker	28	Drills, Paper	22		
Box Tape Dispenser	16	Drying Racks	21	Job Ticket Holders	13
Brayer	6	Duplicator Trucks	21	Joggers	46
Brush, Padding	20	Dust Blaster	10	Jogging Aid	34
Brushes, Opaque	6	Dust-Off	10		
				Knife, Pad	20
Caliper	12	E Scale	4	Knife, Ink, Roll w/Sheath	15
Cameraman's Guide	6	Ear Plugs	16	Knives, Paper Cutter	34
Carbonless Adhesive	20	Electric Stapler	26,28	Knives/Blades, Olfa	3
Card Maker	36			Knives/Blades, X-ACTO	3
Carts, Paper	21	Fan-Apart Glue	20		
CBX-100	31	Fast Orange Cleaner	16	L-Square	4
Challenge Drill Bits	23	Film Cleaner	11	Laminating Supplies	38
Chip Board	20	Film, Shrink	33	Laminator Cleaning Kit	38
Chip Remover	25	Foam Board Cutter	40	Laminator Roll Cutter	38
Cleaner Kit, Laminators	38	Foam Tape	43	Laminators	38,39
Cleaner, Glass	10,11	Folding Bones	32		
Cleaner, Hand	16	Formula Guide	9		
Cleaning Bar, Laminator	38	FP-60 Drill Bits	23		
Clean-up Sheets	14	FP Series Paper Drills	22		
Cohesive Bands	46	FP Series Paper Punches	29,30		
Coil Inserter	30				
Coil Machines	30,31				
Coiner-340 Coil Inserter	30				
Cold Laminator	39				
Corrugated Plastic	45				
Cushioned Envelopes	16				
Color Bridge, Pantone	9				
Comb Punch and Binder	30				
Copy Check	8				
Corner Cutter	37				
Cotton Gloves	45				
Counter, Pad	20				

**INDEX CONTINUED
ON INSIDE BACK COVER**